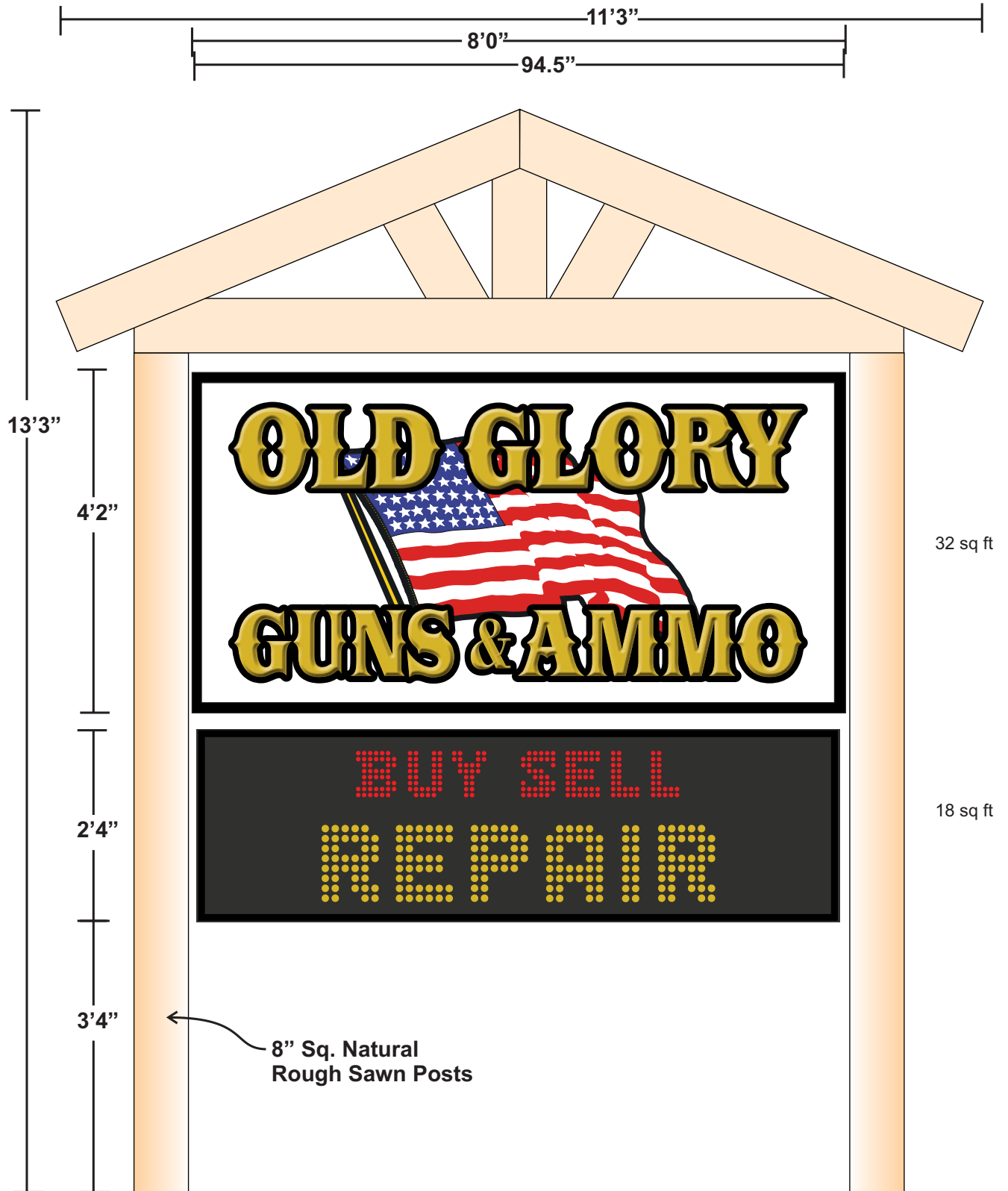


# Proposed Two Sided pole sign



COPYRIGHT © 2014 SignArt, Inc.

This drawing is original artwork created and owned by SignArt, Inc. Any reproduction of this drawing or concept by any means, without the written permission from SignArt, Inc. is strictly prohibited.

X



60 SHARON ST. ▲ MALDEN, MA 02148 ▲ 781-322-3785

[www.signartboston.com](http://www.signartboston.com)

SALESMAN

**Ed Spinney**

CUSTOMER

**Old Glory Guns & Ammo / NH**

SCALE

**As Shown**

APPROVED BY

DRAWN BY

**EWS 5-4-19**

Abutters:

1. Arnaud V. & Ruth M. Thibodeau  
125 Fitchburg Rd.  
Greenville, NH 03048  
1-Family / Residential

2. BMMTB Properties, LLC  
35 Oak Street  
North Billerica, MA 01862  
( Commercial/Industrial lot - VACANT )

3. HEG 7 Sophia's Way LLC  
2 International Way  
Lawrence, MA 01842

ADDITIONAL ABUTTER  
INFORMATION:

MAP 1 LOT 47  
COUNTRY CORNER MILE REALTY, LLC  
152 HITCHING POST LAND  
BEDFORD, NH 03110  
VOL.6793 PG.2422 12/20/02  
(H.C.R.D. PLAN #21200)  
(COMM/IND)

MAP 1 LOT 46C  
JAMES W. &  
ROBIN K. REISSFELDER  
774 FITCHBURG ROAD  
GREENVILLE, NH 03048  
VOL.5689 PG.1771 1/21/96  
(774 FITCHBURG ROAD)  
(2-FAMILY RESIDENTIAL)

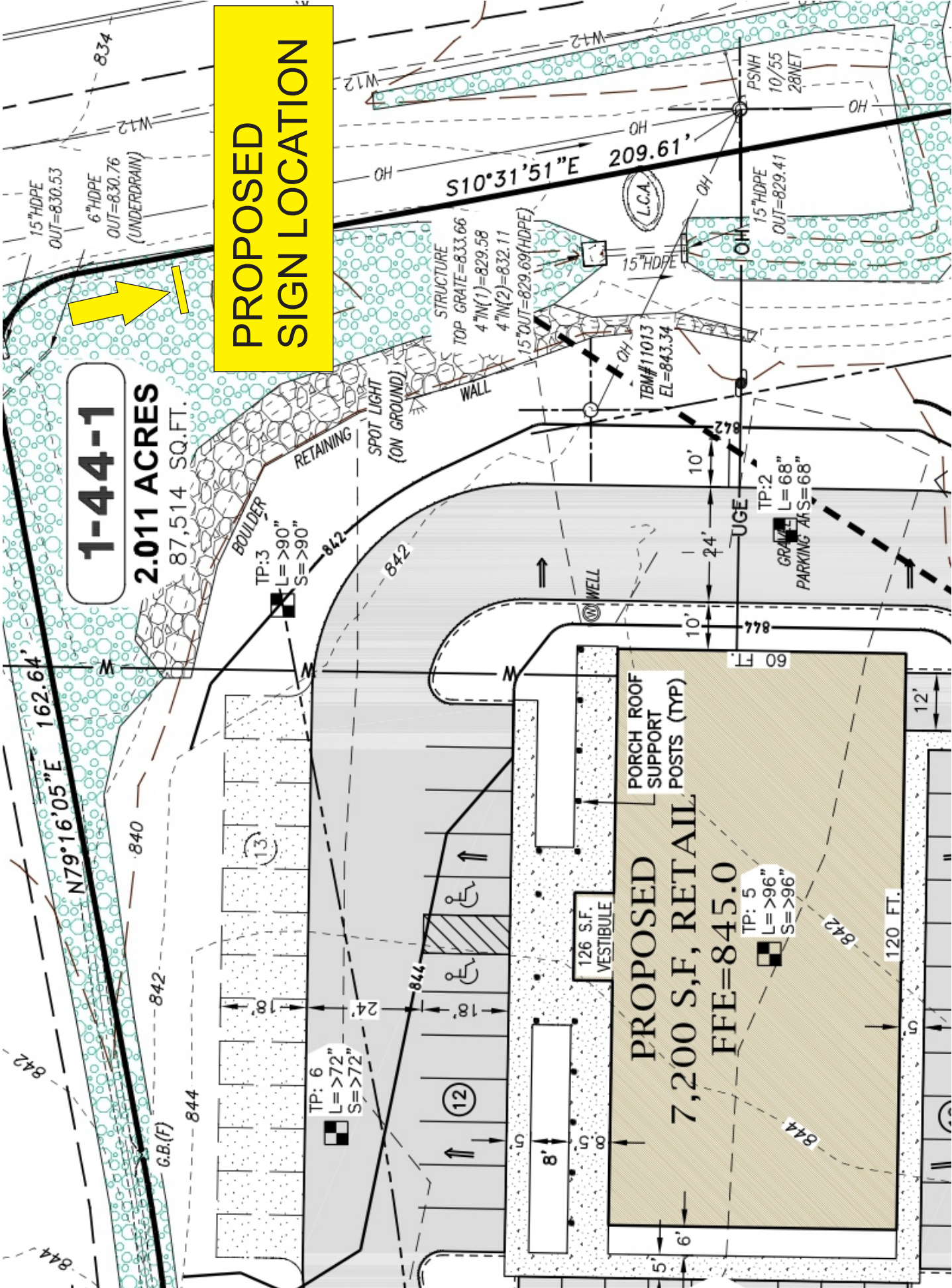
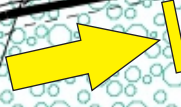
MAP 1 LOT 46  
PAUL E. CORMIER  
670 MASS. AVE.  
LUNENBURG, MA 01462  
VOL.8011 PG.200 8/14/08  
(782 FITCHBURG ROAD)  
(1-FAMILY RESIDENTIAL)

MAP 1 LOT 46E  
JOHN J. FANELLI  
47 BARRETT ROAD  
GREENVILLE, NH 03048  
VOL.7532 PG.2769 8/25/05  
(810 FITCHBURG ROAD)  
(COMM/IND)

1-44-1

2.011 ACRES  
87,514 SQ.FT.

PROPOSED  
SIGN LOCATION



PROPOSED  
7,200 S.F. RETAIL  
FFE=845.0

126 S.F.  
VESTIBULE

PORCH ROOF  
SUPPORT  
POSTS (TYP)

TP: 5  
L = >96"  
S = >96"

TP: 6  
L = >72"  
S = >72"

TP: 2  
L = 68"  
S = 68"

TP: 3  
L = >90"  
S = >90"

STRUCTURE  
TOP GRATE = 833.66  
4" IN (1) = 829.58  
4" IN (2) = 832.11  
15" HDPE  
OUT = 829.69 (HDPE)

L.C.A.  
TBM# 11013  
EL = 843.34

PSNH  
10/55  
28NET

S10°31'51"E  
209.61'

15" HDPE  
OUT = 830.53  
6" HDPE  
OUT = 830.76  
(UNDERDRAIN)

N79°16'05"E  
162.64'

N79°16'05"E  
162.64'

842

842

842

842

842

842

842

842

842

842

842

842

842

842

842

842

844

844

844

844

844

844

844

844

844

844

844

844

844

844

844

844

844

844

844

844

844

844

844

844

844

844

844

844

844

844

844

844

844

844

844

844

844

844

844

844

844

844

844

844

844

844

844

844

844

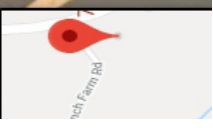
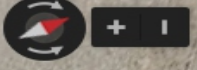
844

844

844

844

844



**PROPOSED  
SIGN LOCATION**

