

# Town of GREENVILLE Hillsborough County New Hampshire

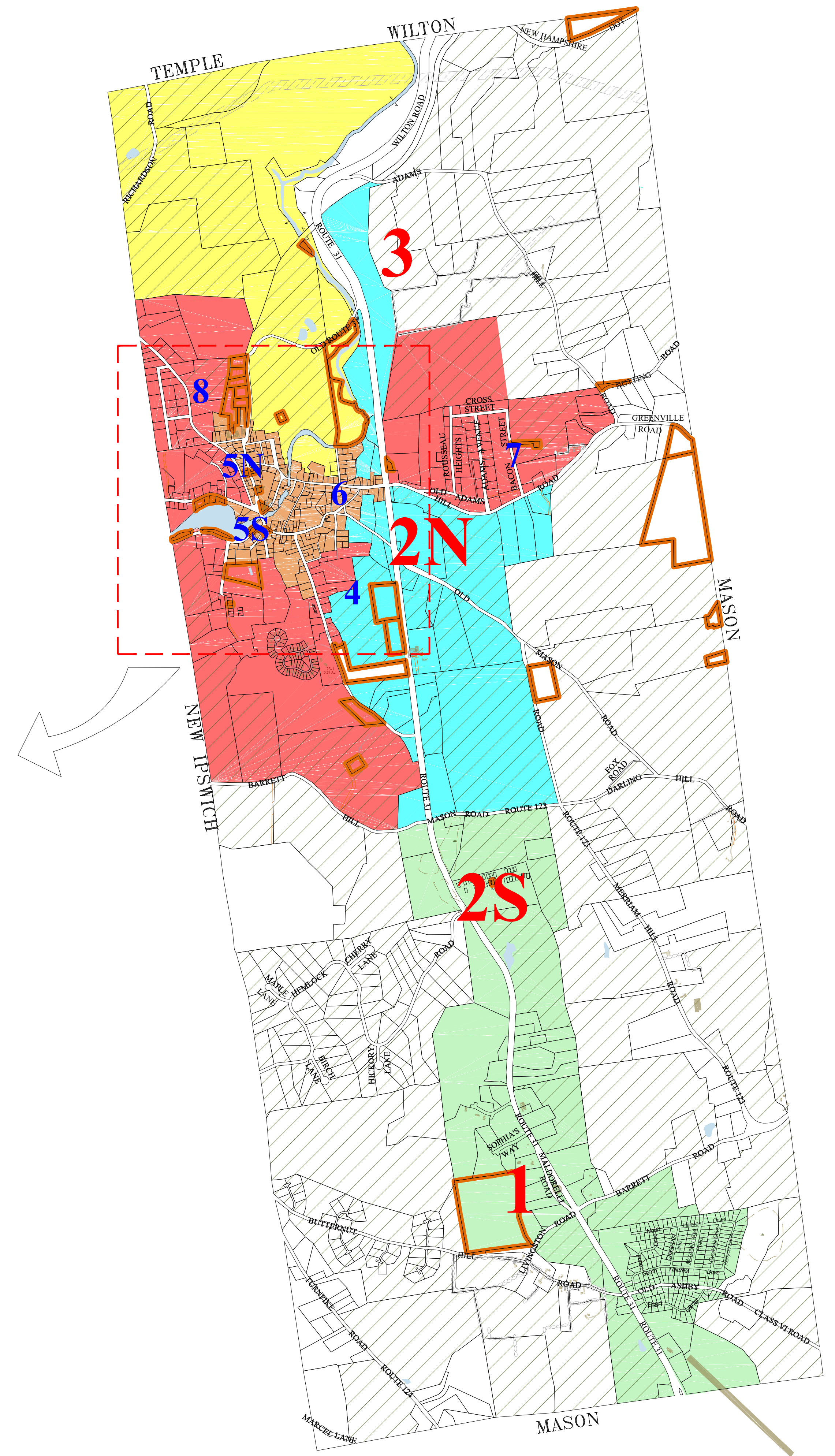
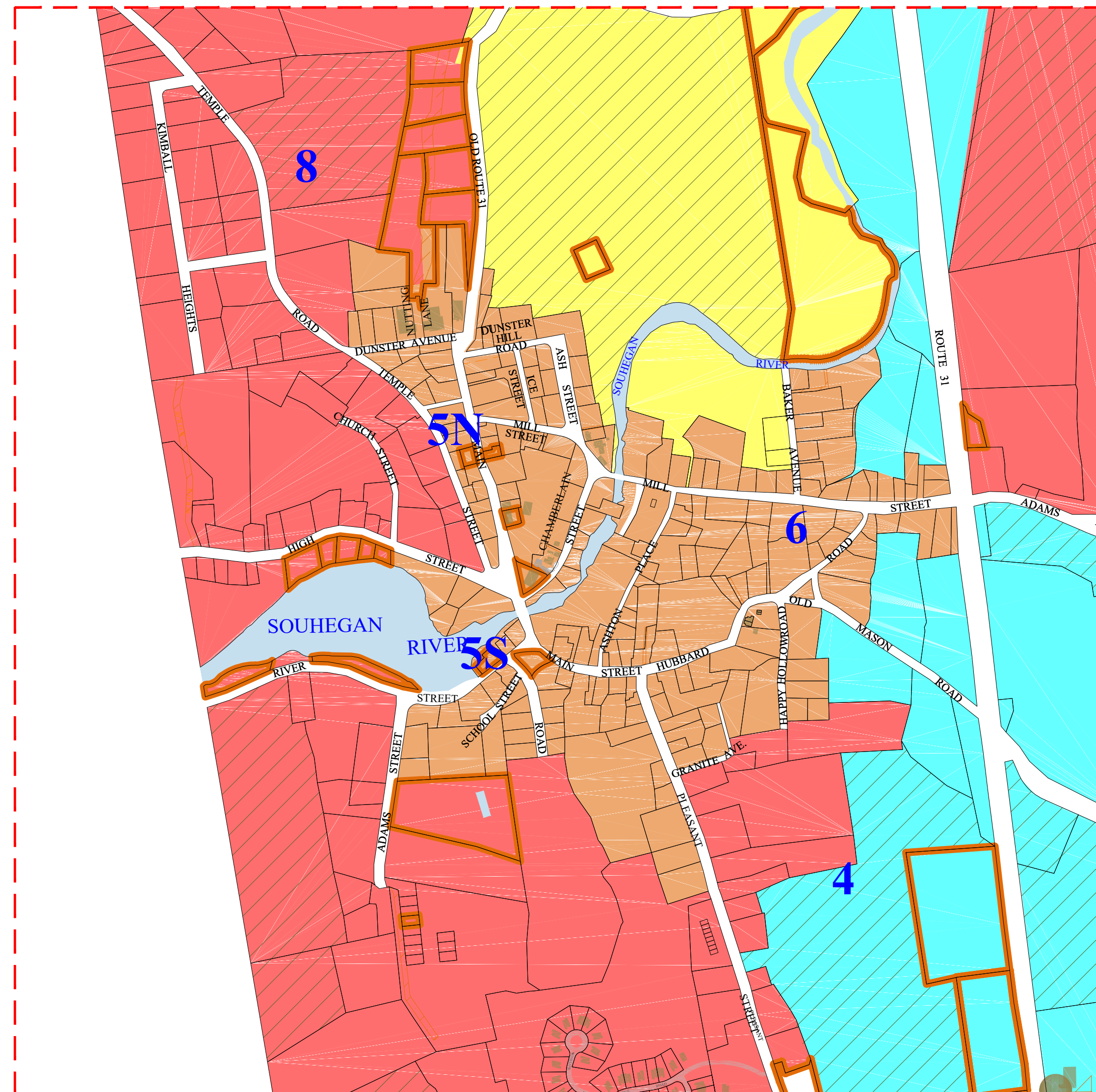
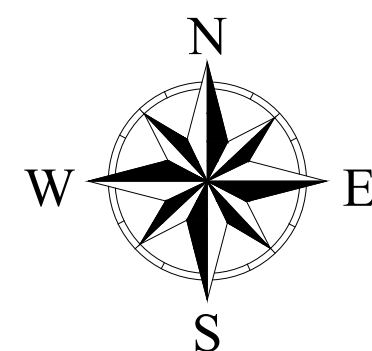
## LEGEND

- PARCEL INFO**
- 2-12 Lot-Sub
  - 5 Ac.S Parcel Acreage
  - C - Calculated, S - Surveyed
  - 200' Dimensions (Feet)
- WATER FEATURES**
- Lakes and Brooks
  - Wetlands
- LAND**
- Current Use
  - Town Owned
  - ROW/Easement
- ZONING**
- Rural / Agricultural
  - Residential
  - Downtown
  - Commercial
  - Commercial / Industrial
  - Industrial

## SCALES

1":100'

1":400'

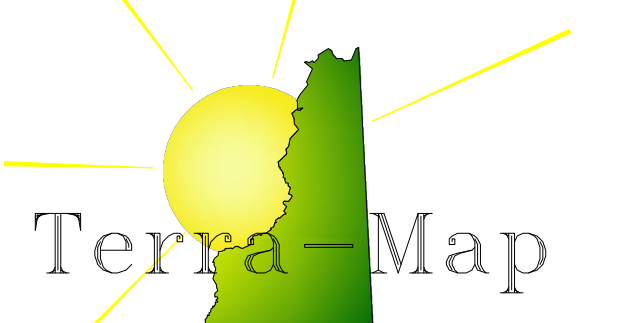


Phone 603 798-4419 Fax 603 798-4263

Avitar Associates of New England, Inc.

www.avitarassociates.com  
TerraMap@avitarassociates.com





Phone 603 798-4419 Fax 603 798-4263

A Division Of Avitar Associates of New England, Inc.

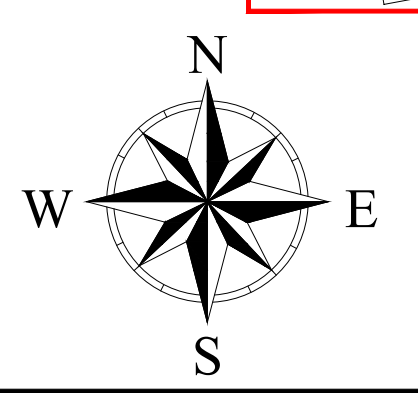
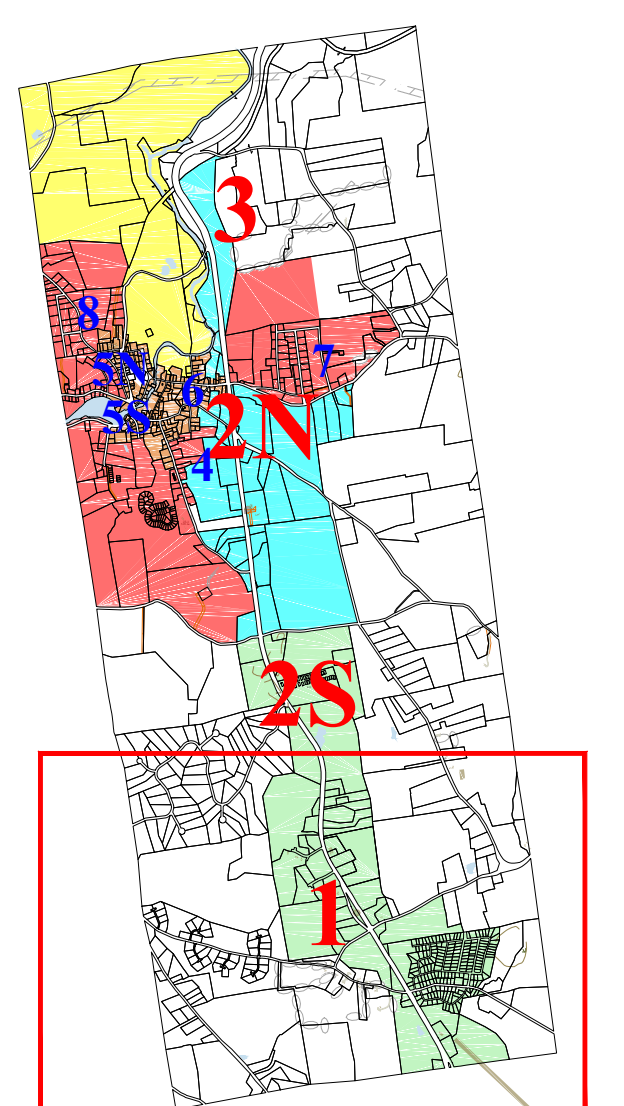
www.avitarassociates.com  
TerraMap@avitarassociates.com

# Town of GREENVILLE Hillsborough County New Hampshire

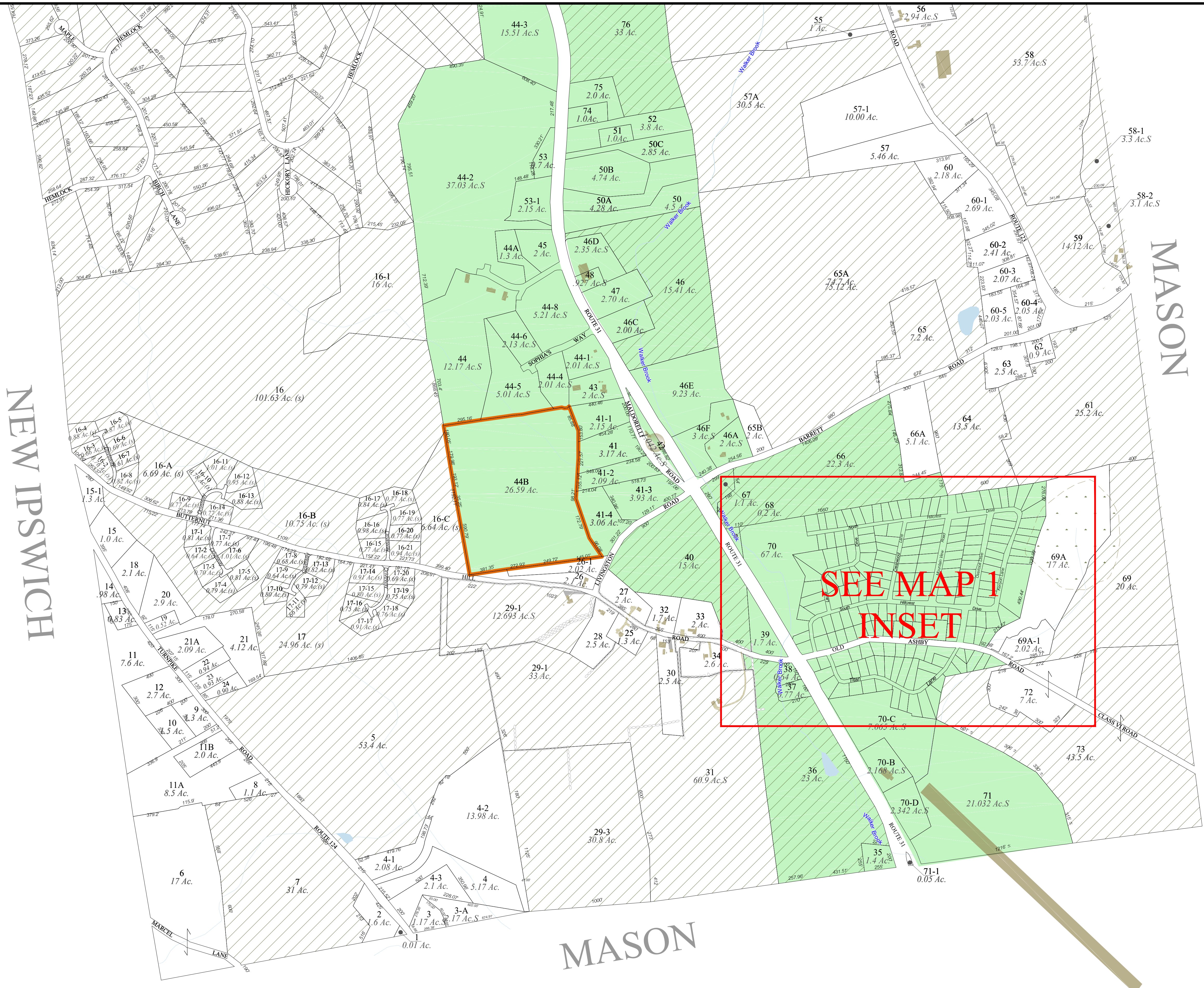
## LEGEND

- PARCEL INFO**
- 2-12 Lot-Sub
  - 5 Ac.S Parcel Acreage
  - C - Calculated, S - Surveyed
  - 200' Dimensions (Feet)
- WATER FEATURES**
- Lakes and Brooks
  - Wetlands
- LAND**
- Current Use
  - Town Owned
  - ROW/Easement
- ZONING**
- Rural / Agricultural
  - Residential
  - Downtown
  - Commercial
  - Commercial / Industrial
  - Industrial

SCALE 1" : 400'



# MAP 1

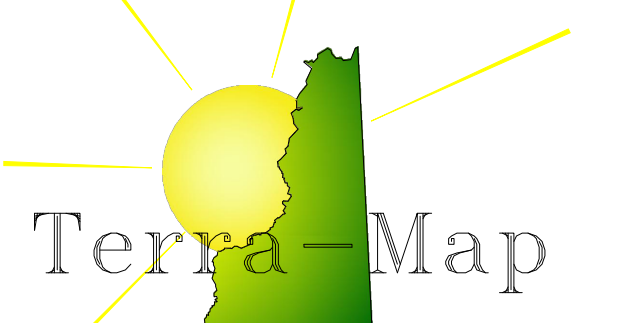


For Assessment Purposes  
Not to be used for conveyances

MAP NOTES: \_\_\_\_\_  
\_\_\_\_\_

Revised April 1, 2021





Phone  
603 798-4419

Fax  
603 798-4263

A Division Of  
**Avitar Associates**  
of New England, Inc.

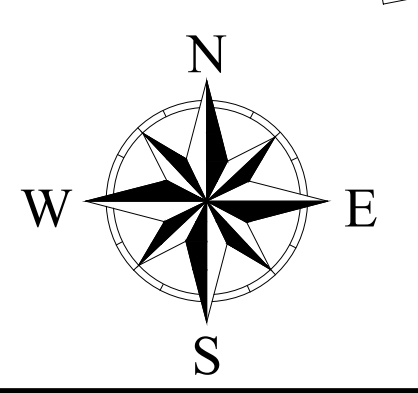
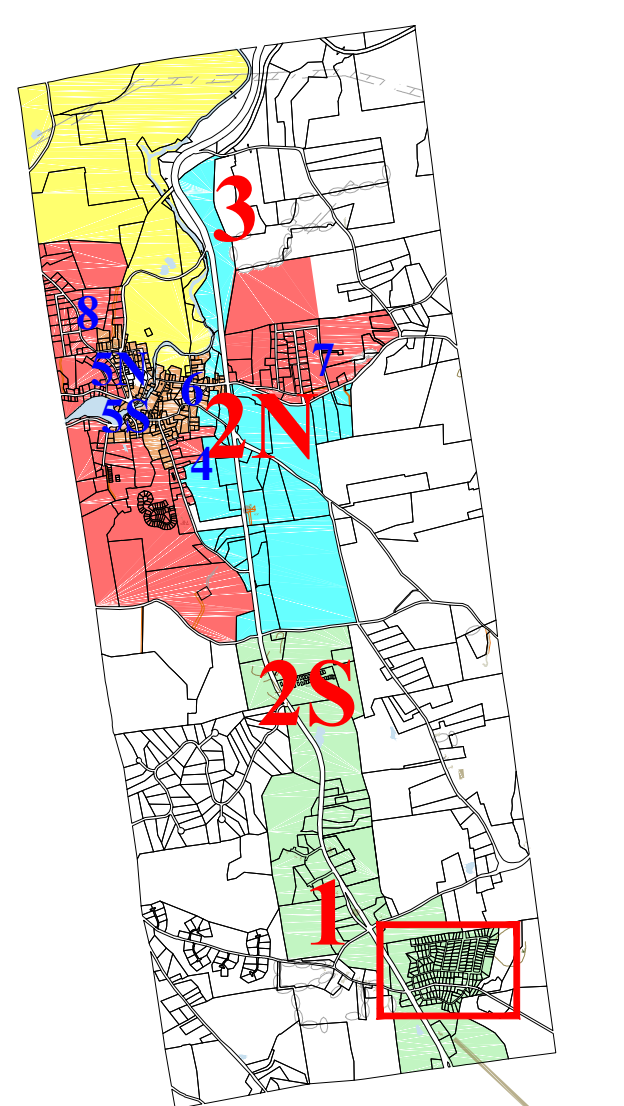
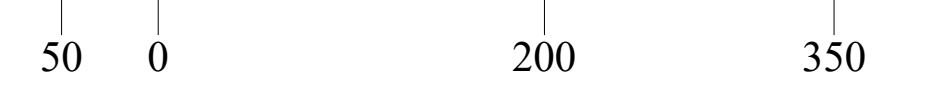
www.avitarassociates.com  
TerraMap@avitarassociates.com

# Town of GREENVILLE Hillsborough County New Hampshire

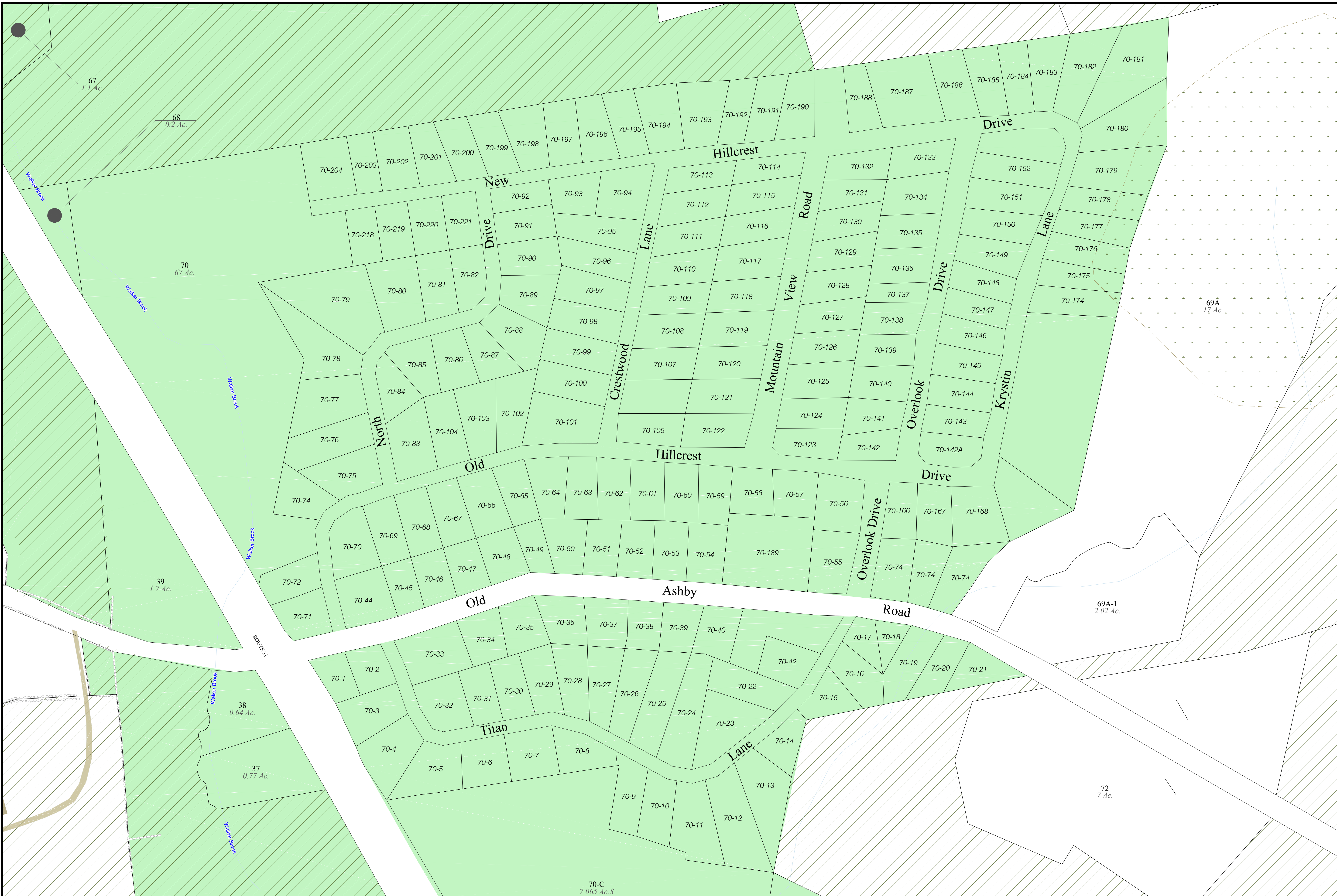
## LEGEND

- PARCEL INFO**
  - 2-12 Lot-Sub
  - 5 Ac.S Parcel Acreage
  - C - Calculated, S - Surveyed
  - 200' Dimensions (Feet)
- WATER FEATURES**
  - Lakes and Brooks
  - Wetlands
- LAND**
  - Current Use
  - Town Owned
  - ROW/Easement
- ZONING**
  - Rural / Agricultural
  - Residential
  - Downtown
  - Commercial
  - Commercial / Industrial
  - Industrial

**SCALE** 1" : 100'



**MAP**  
**1 INSET**

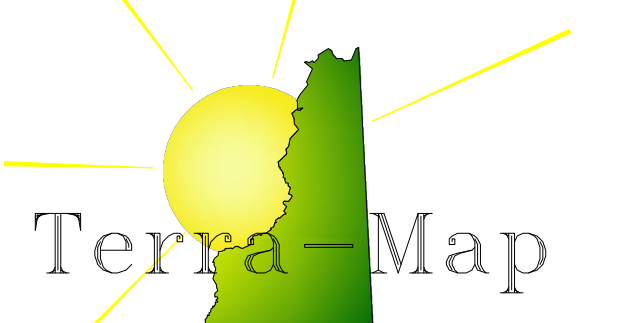


For Assessment Purposes  
Not to be used for conveyances

**MAP NOTES:** \_\_\_\_\_  
\_\_\_\_\_  
\_\_\_\_\_

Revised April 1, 2021





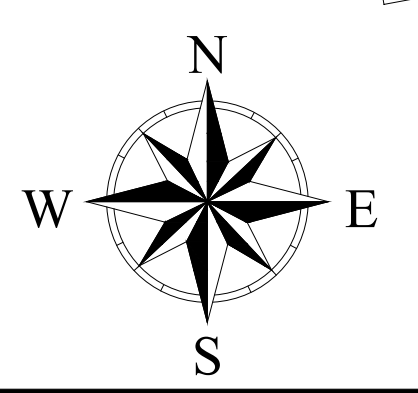
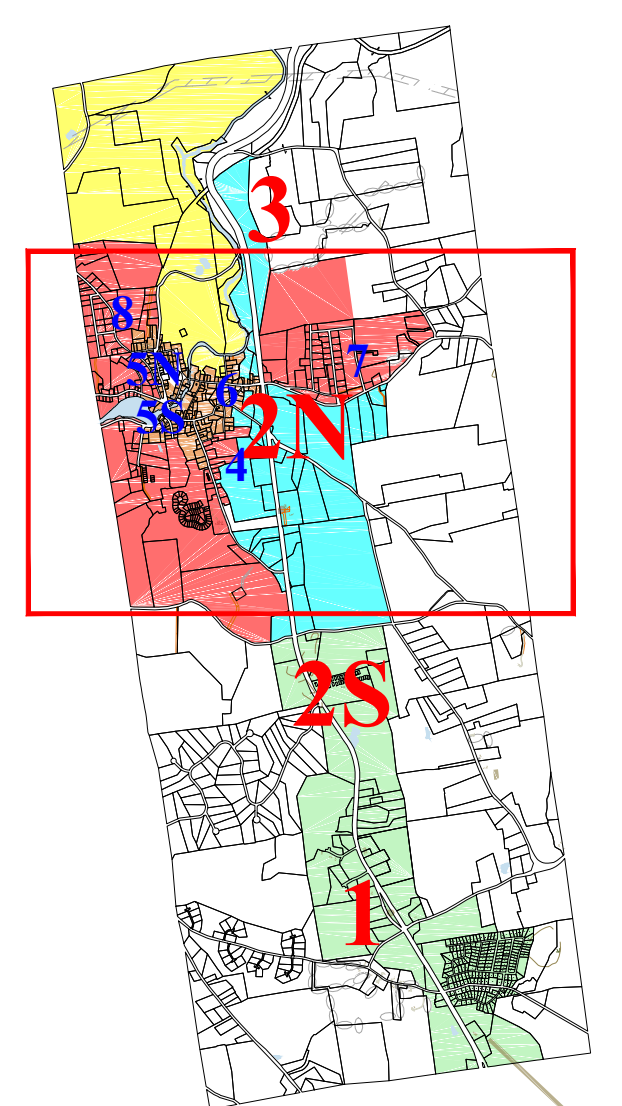
Phone 603 798-4419 Fax 603 798-4263  
 A Division Of  
**Avitar Associates**  
 of New England, Inc.  
 www.avitarassociates.com  
 Terranmap@avitarassociates.com

Town of  
**GREENVILLE**  
 Hillsborough County  
 New Hampshire

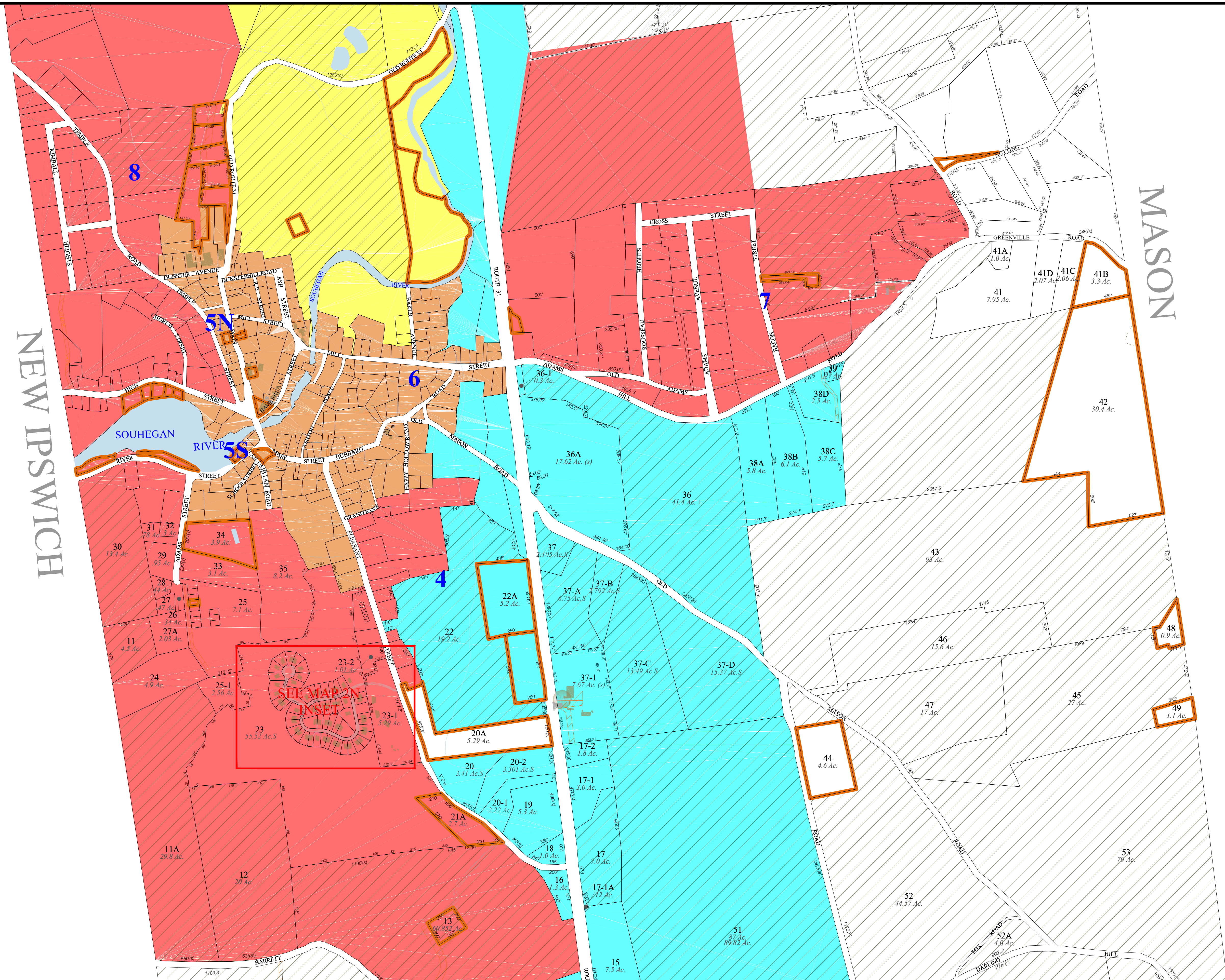
**LEGEND**

- PARCEL INFO**  
 2-12 Lot-Sub  
 5 Ac.S Parcel Acreage  
 C - Calculated, S - Surveyed  
 200' Dimensions (Feet)
- WATER FEATURES**  
 Lakes and Brooks  
 Wetlands
- LAND**  
 Current Use  
 Town Owned  
 ROW/Easement
- ZONING**  
 Rural / Agricultural  
 Residential  
 Downtown  
 Commercial  
 Commercial / Industrial  
 Industrial

**SCALE** 1" : 400'



**MAP**  
**2N**



NEW IPSWICH

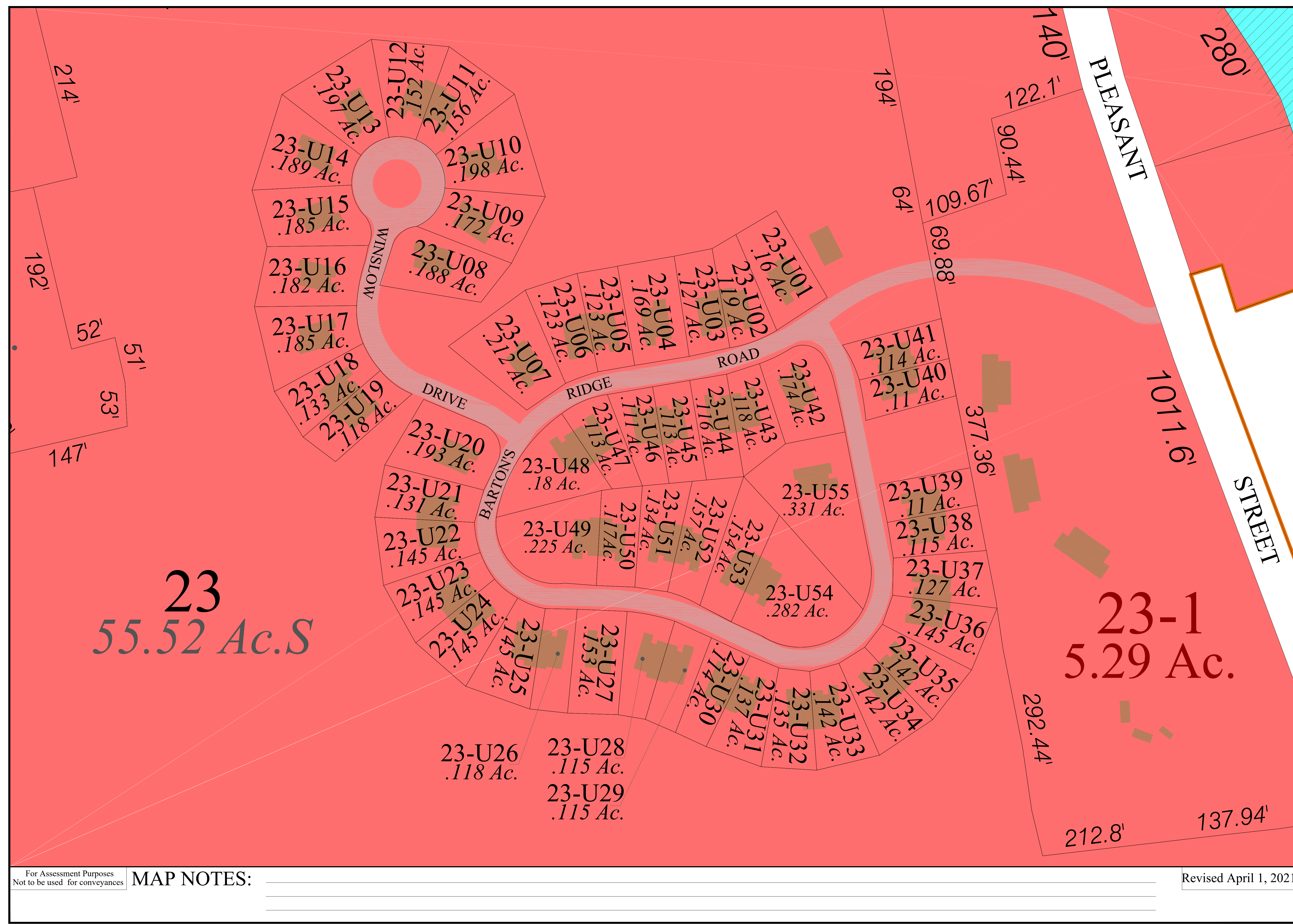
MASON

For Assessment Purposes  
 Not to be used for conveyances

**MAP NOTES:** \_\_\_\_\_

Revised April 1, 2021





**Terra-Map**  
A Division Of  
**Avatar Associates**  
of New England, Inc.  
www.avatarassociates.com  
TerraMap@avatarassociates.com  
Phone 603 798-4419 Fax 603 798-4263

**Town of GREENVILLE**  
Hillsborough County  
New Hampshire

**LEGEND**

**PARCEL INFO**

- 2-12 Lot-Sub
- 5 Ac.S Parcel Acreage
- C - Calculated, S - Surveyed
- 200' Dimensions (Feet)

**WATER FEATURES**

- Lakes and Brooks
- Wetlands

**LAND**

- Current Use
- Town Owned
- ROW/Easement

**ZONING**

- Rural / Agricultural
- Residential
- Downtown
- Commercial
- Commercial / Industrial
- Industrial

**SCALE** 1" = 400'

200 0 800 1400

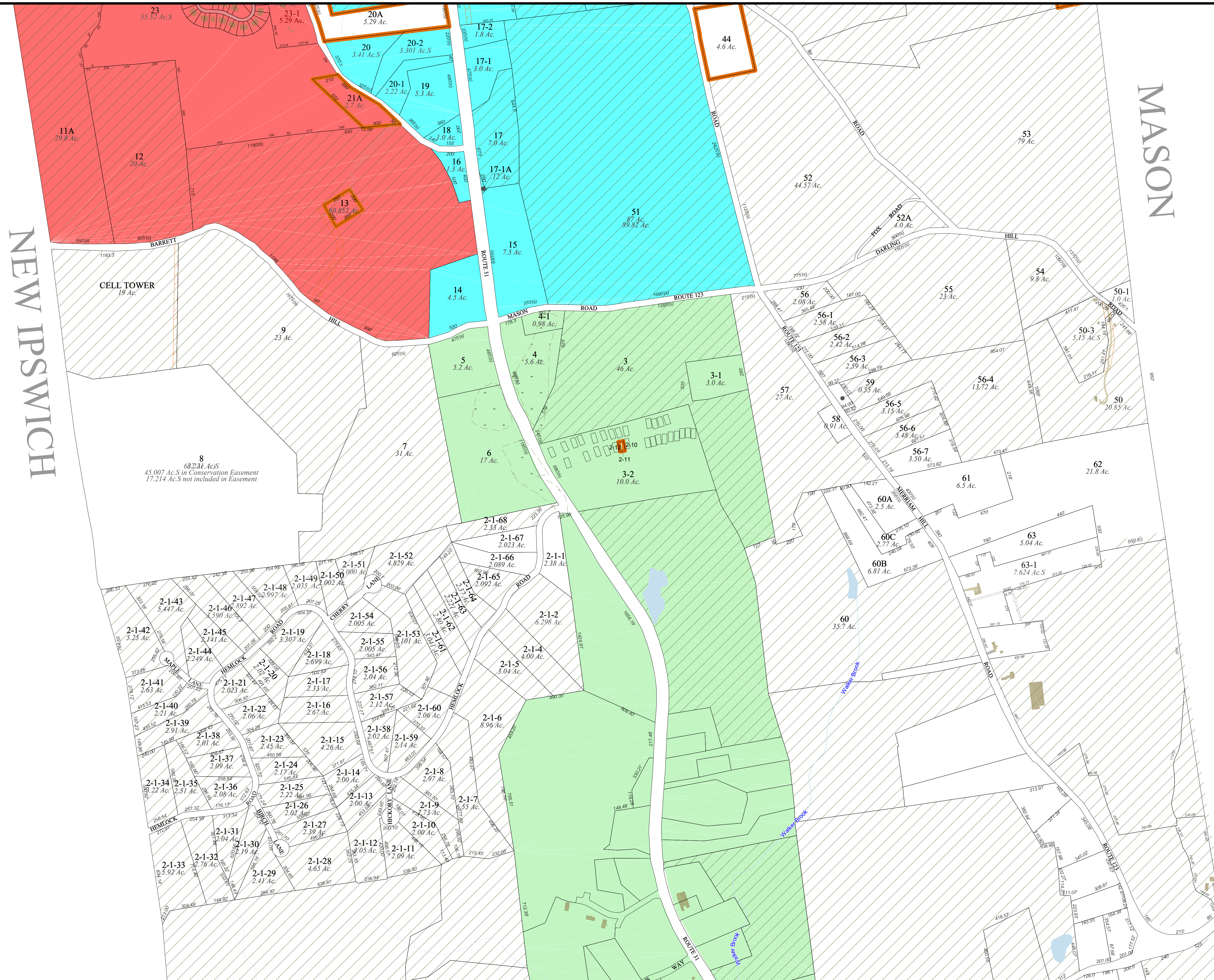
**MAP 2N INSET**

Revised April 1, 2021

For Assessment Purposes  
Not to be used for conveyances

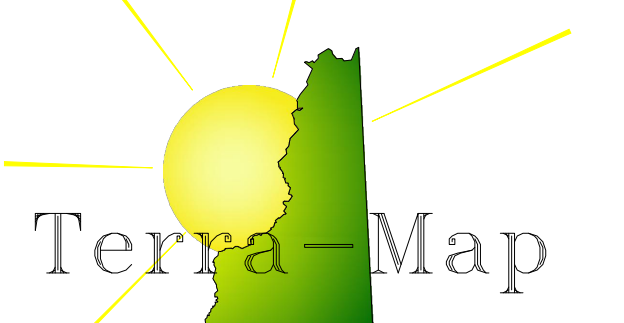
MAP NOTES: \_\_\_\_\_  
\_\_\_\_\_  
\_\_\_\_\_





NEW IPSWICH

MASON



Phone 603 798-4419 Fax 603 798-4263

Avitar Associates of New England, Inc.

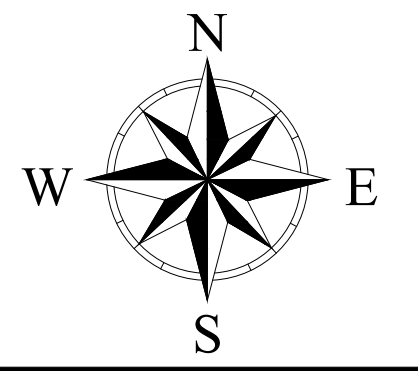
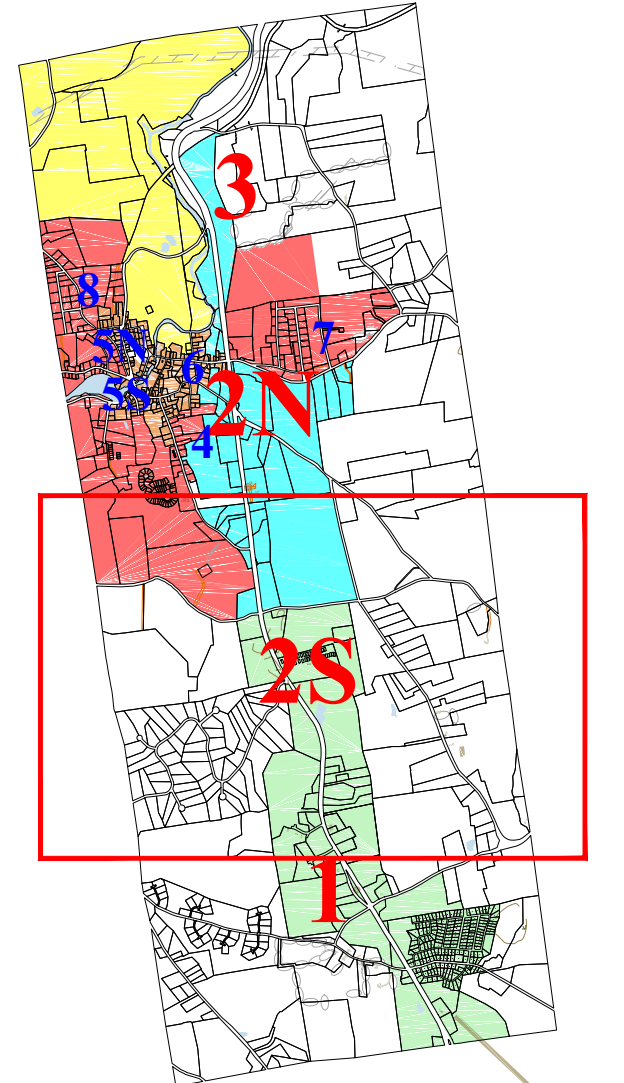
www.avitarassociates.com  
TerraMap@avitarassociates.com

Town of  
**GREENVILLE**  
Hillsborough County  
New Hampshire

LEGEND

- PARCEL INFO
- 2-12 Lot-Sub
- 5 Ac.S Parcel Acreage
- C - Calculated, S - Surveyed
- 200' Dimensions (Feet)
- WATER FEATURES
- Lakes and Brooks
- Wetlands
- LAND
- Current Use
- Town Owned
- ROW/Easement
- ZONING
- Rural / Agricultural
- Residential
- Downtown
- Commercial
- Commercial / Industrial
- Industrial

SCALE 1" : 400'



MAP  
**2S**

For Assessment Purposes  
Not to be used for conveyances

MAP NOTES:

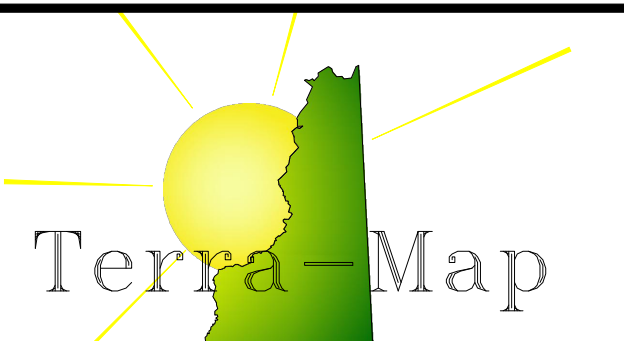
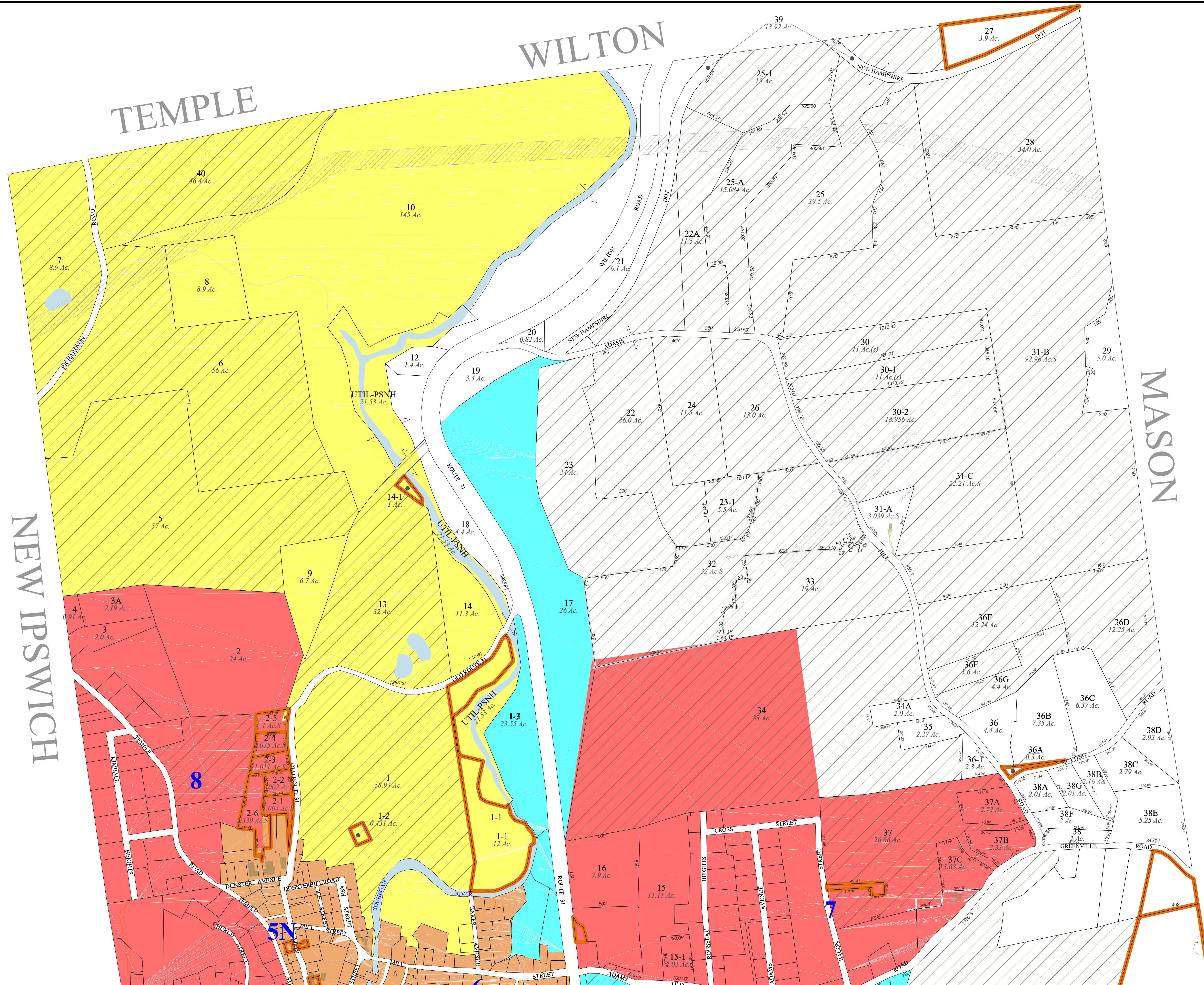
\_\_\_\_\_

\_\_\_\_\_

\_\_\_\_\_

Revised April 1, 2021





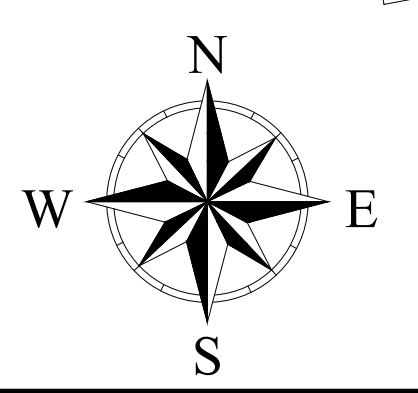
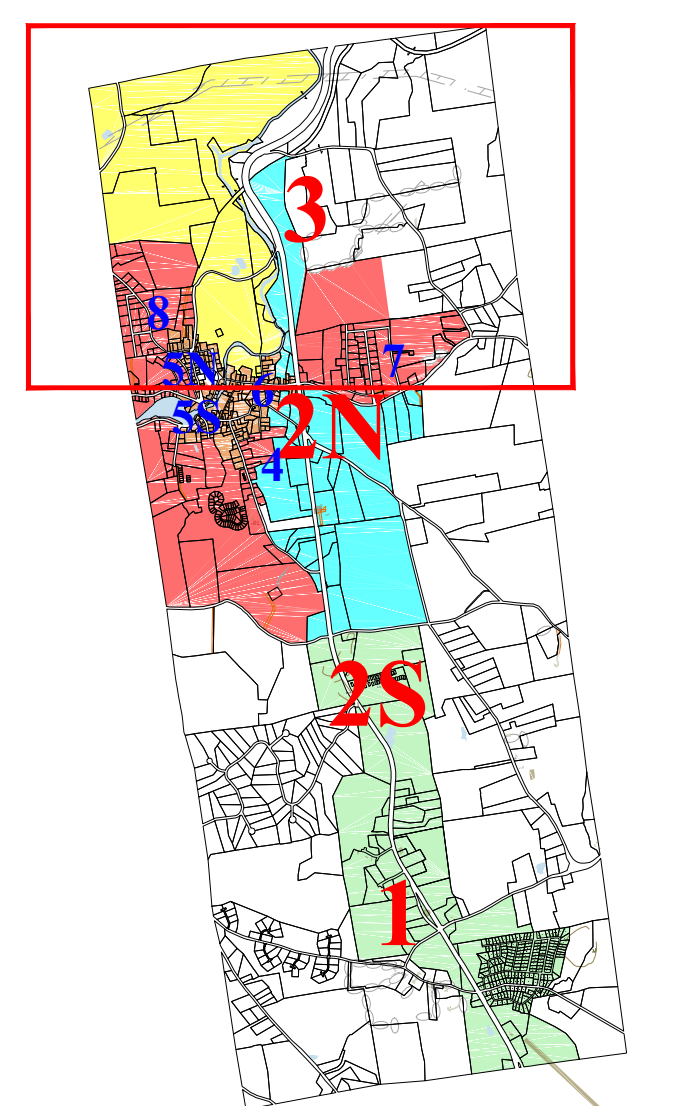
Phone 603 798-4419 Fax 603 798-4263  
 A Division Of  
**Avitar Associates**  
 of New England, Inc.  
 www.avitarassociates.com  
 Terramap@avitarassociates.com

Town of  
**GREENVILLE**  
 Hillsborough County  
 New Hampshire

**LEGEND**

- PARCEL INFO**
- 2-12 Lot-Sub
  - 5 Ac.S Parcel Acreage
  - C - Calculated, S - Surveyed
  - 200' Dimensions (Feet)
- WATER FEATURES**
- Lakes and Brooks
  - Wetlands
- LAND**
- Current Use
  - Town Owned
  - ROW/Easement
- ZONING**
- Rural / Agricultural
  - Residential
  - Downtown
  - Commercial
  - Commercial / Industrial
  - Industrial

**SCALE** 1" : 400'



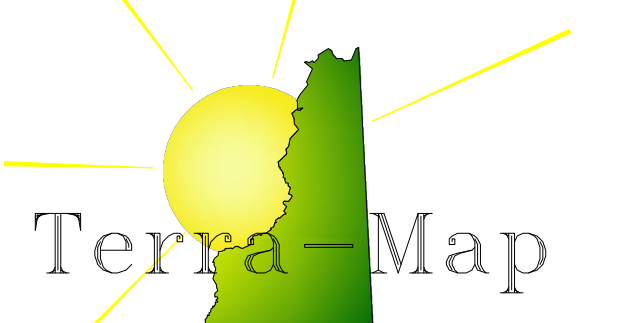
**MAP**  
**3**

For Assessment Purposes  
 Not to be used for conveyances

**MAP NOTES:** \_\_\_\_\_  
 \_\_\_\_\_  
 \_\_\_\_\_

Revised April 1, 2021





Phone  
603 798-4419

Fax  
603 798-4263

A Division Of  
**Avitar Associates**  
of New England, Inc.

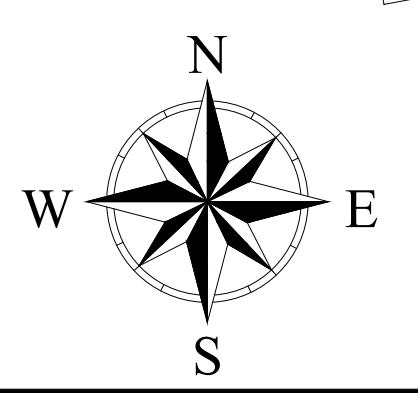
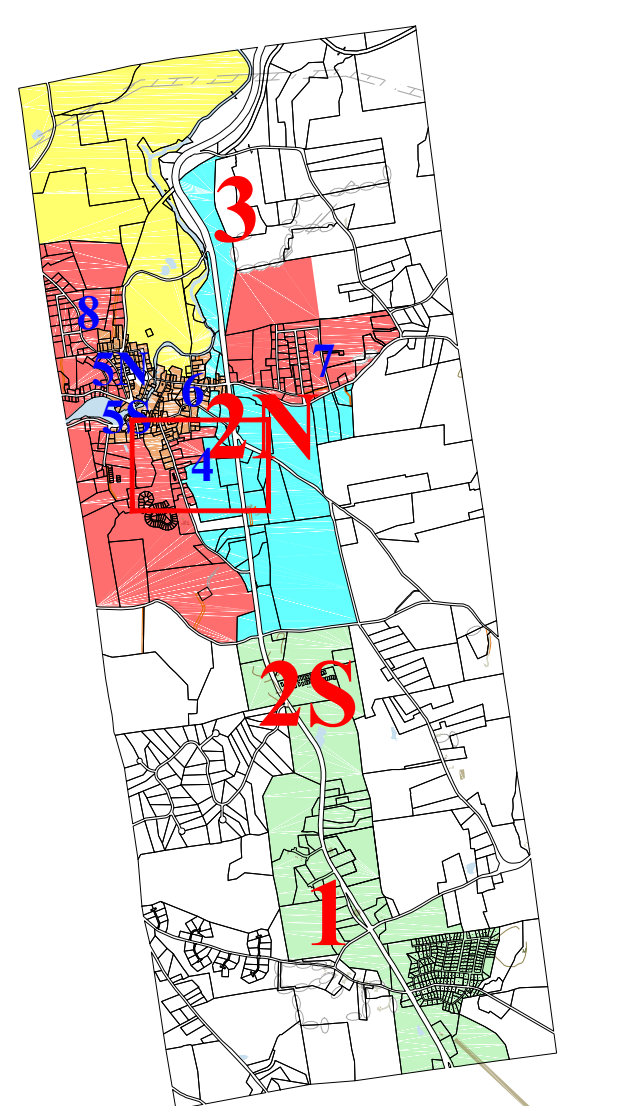
www.avitarassociates.com  
TerraMap@avitarassociates.com

# Town of GREENVILLE Hillsborough County New Hampshire

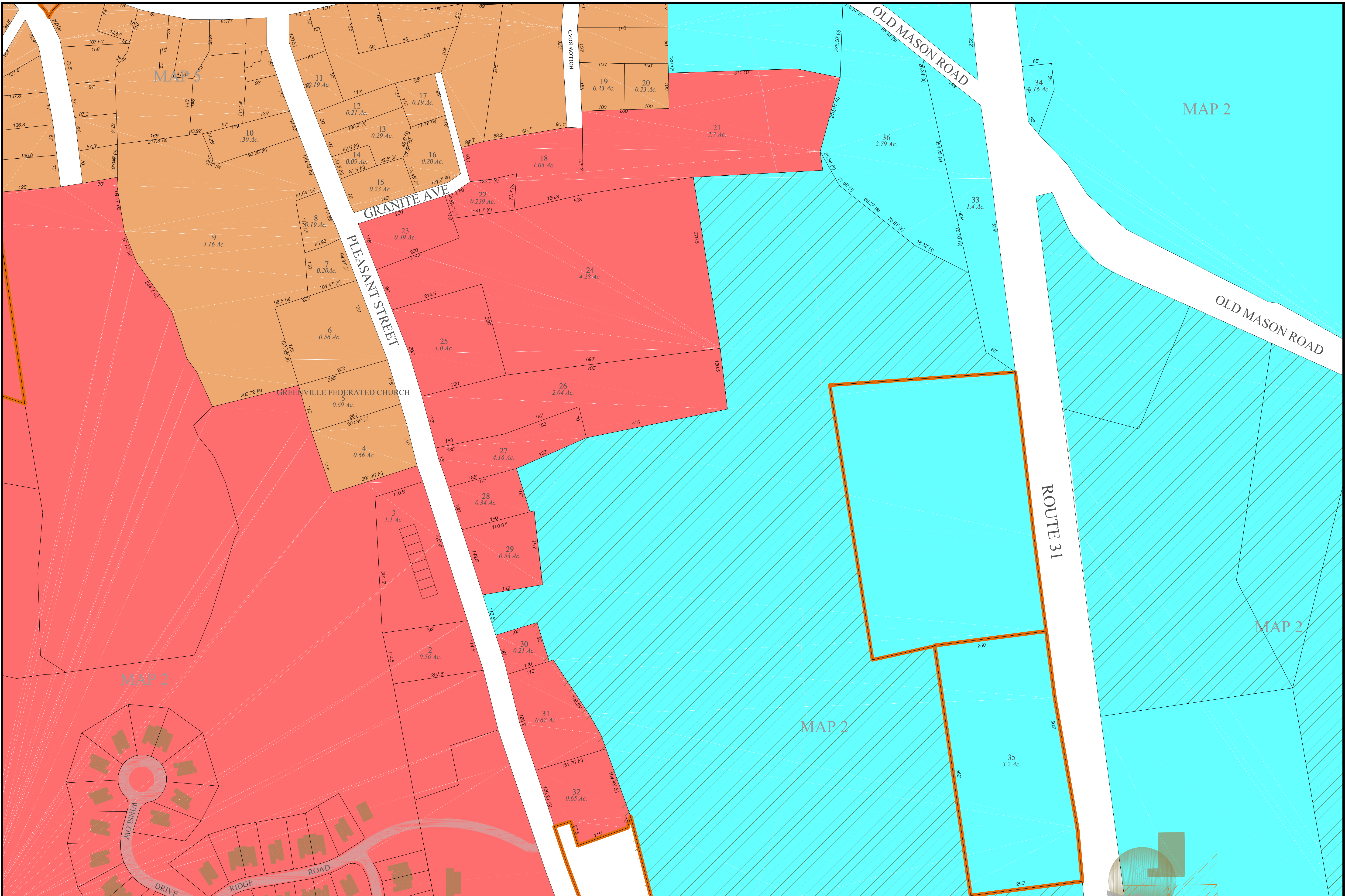
## LEGEND

- PARCEL INFO**
  - 2-12 Lot-Sub
  - 5 Ac.S Parcel Acreage
  - C - Calculated, S - Surveyed
  - 200' Dimensions (Feet)
- WATER FEATURES**
  - Lakes and Brooks
  - Wetlands
- LAND**
  - Current Use
  - Town Owned
  - ROW/Easement
- ZONING**
  - Rural / Agricultural
  - Residential
  - Downtown
  - Commercial
  - Commercial / Industrial
  - Industrial

SCALE 1" : 100'



# MAP 4



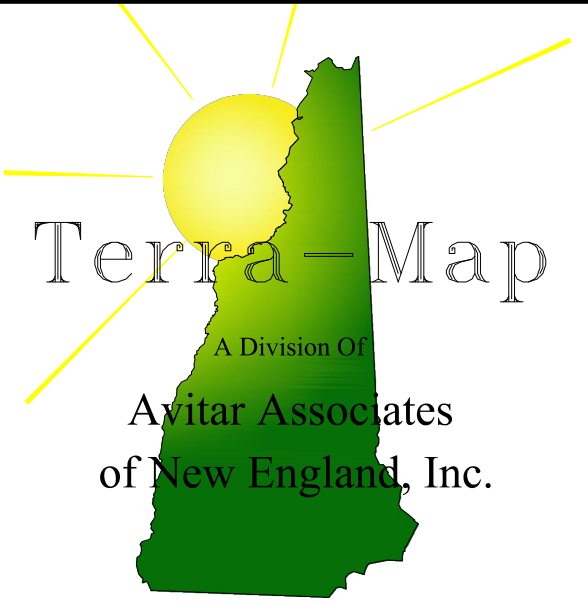
For Assessment Purposes  
Not to be used for conveyances

## MAP NOTES:

\_\_\_\_\_  
\_\_\_\_\_  
\_\_\_\_\_

Revised April 1, 2021





Phone  
603 798-4419

Fax  
603 798-4263

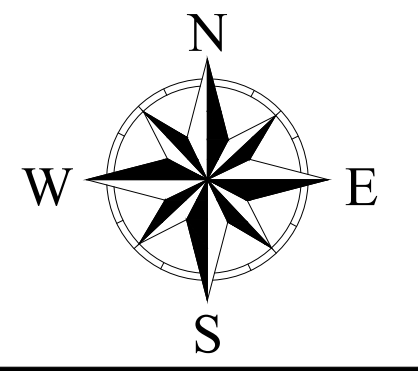
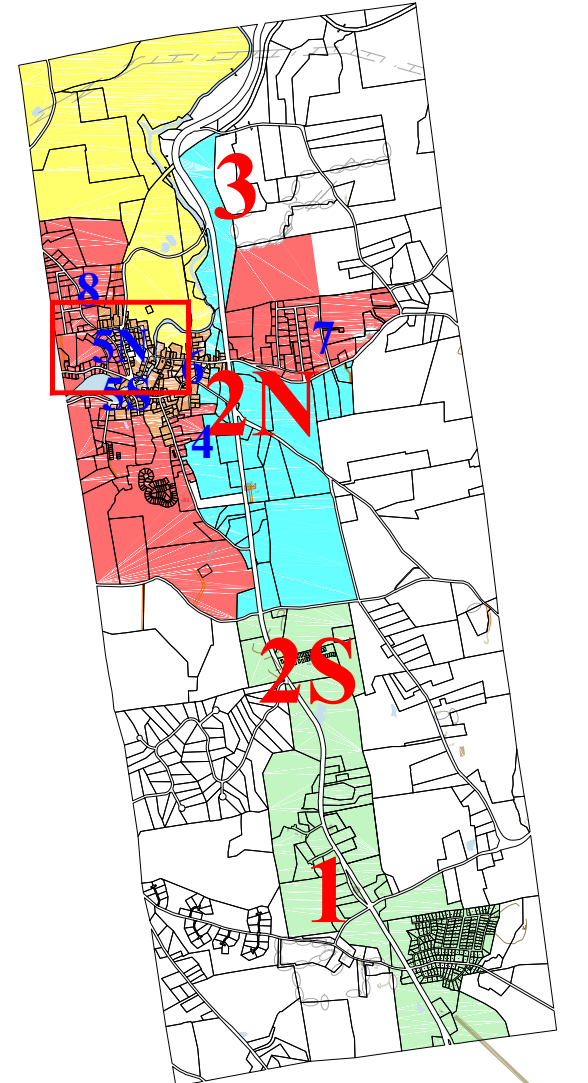
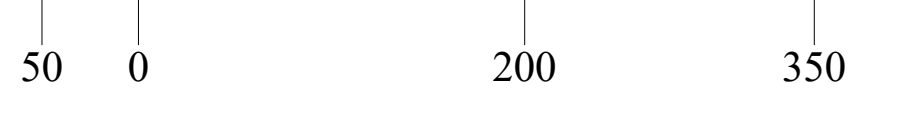
A Division Of  
**Avitar Associates**  
of New England, Inc.  
www.avitarassociates.com  
TerraMap@avitarassociates.com

Town of  
**GREENVILLE**  
Hillsborough County  
New Hampshire

**LEGEND**

- PARCEL INFO**  
 2-12 Lot-Sub  
 5 Ac.S Parcel Acreage  
 C - Calculated, S - Surveyed  
 Dimensions (Feet)  
**WATER FEATURES**  
 Lakes and Brooks  
 Wetlands  
**LAND**  
 Current Use  
 Town Owned  
 ROW/Easement  
**ZONING**  
 Rural / Agricultural  
 Residential  
 Downtown  
 Commercial  
 Commercial / Industrial  
 Industrial

**SCALE 1" : 100'**

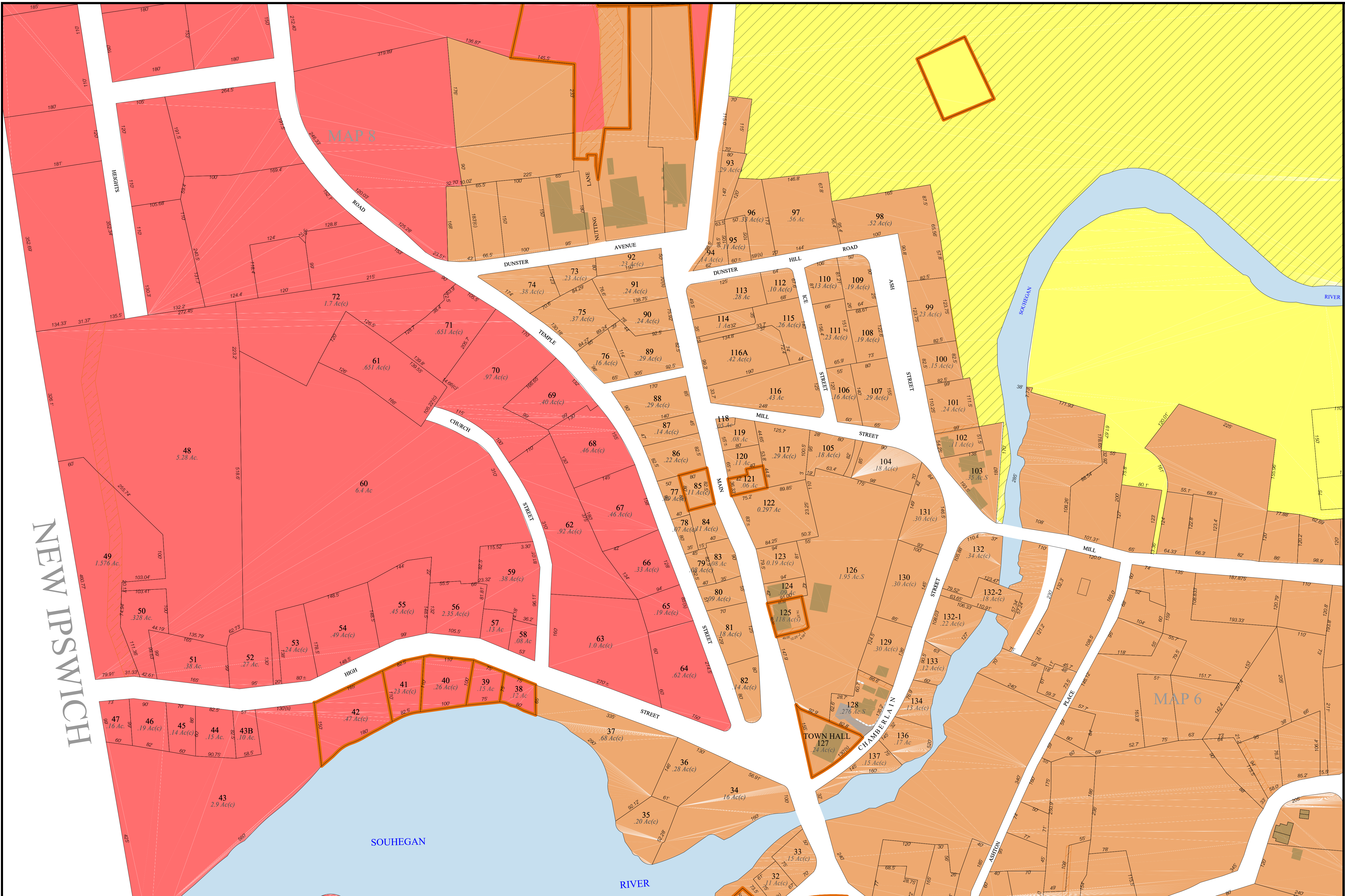


**MAP  
5N**

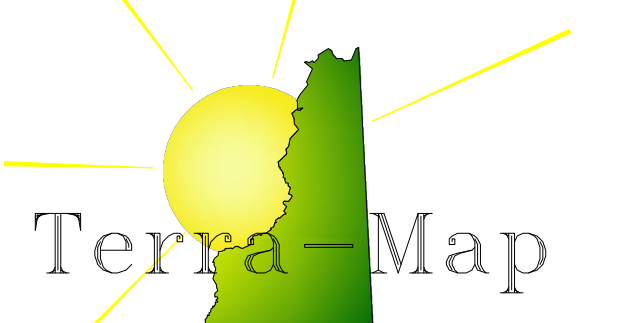
Revised April 1, 2021

**MAP NOTES:** \_\_\_\_\_  
 \_\_\_\_\_  
 \_\_\_\_\_

For Assessment Purposes  
 Not to be used for conveyances







Phone  
603 798-4419

Fax  
603 798-4263

A Division Of  
**Avitar Associates**  
of New England, Inc.

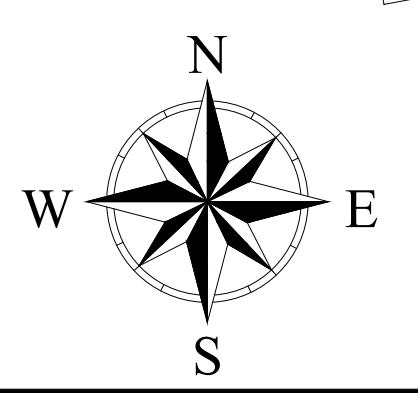
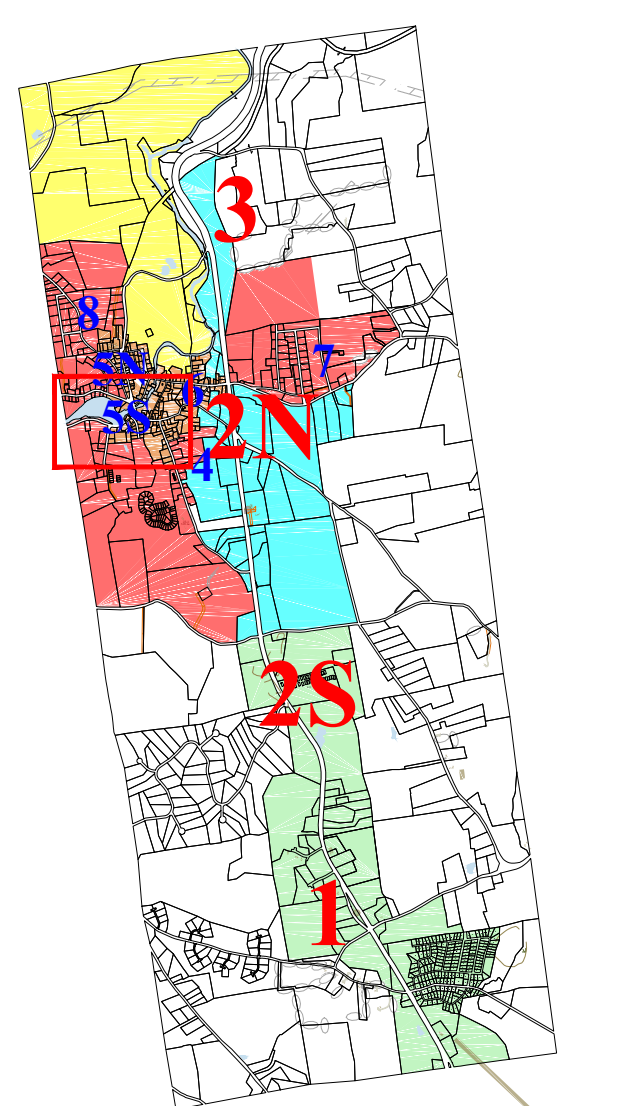
www.avitarassociates.com  
TerraMap@avitarassociates.com

# Town of GREENVILLE Hillsborough County New Hampshire

## LEGEND

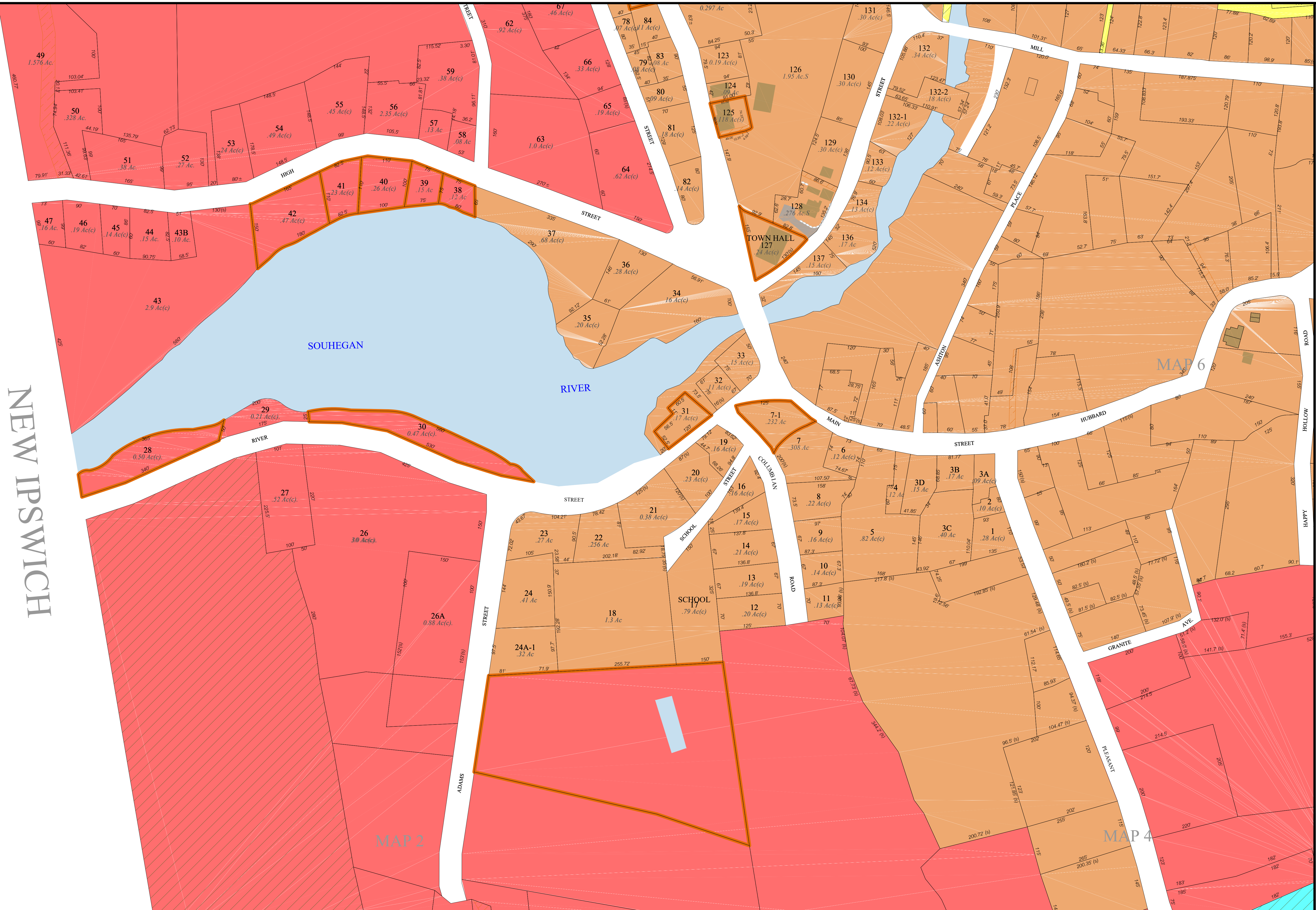
- PARCEL INFO**
  - 2-12 Lot-Sub
  - 5 Ac.S Parcel Acreage
  - C - Calculated, S - Surveyed
  - 200' Dimensions (Feet)
- WATER FEATURES**
  - Lakes and Brooks
  - Wetlands
- LAND**
  - Current Use
  - Town Owned
  - ROW/Easement
- ZONING**
  - Rural / Agricultural
  - Residential
  - Downtown
  - Commercial
  - Commercial / Industrial
  - Industrial

SCALE 1" : 100'



# MAP 5S

NEW IPSWICH

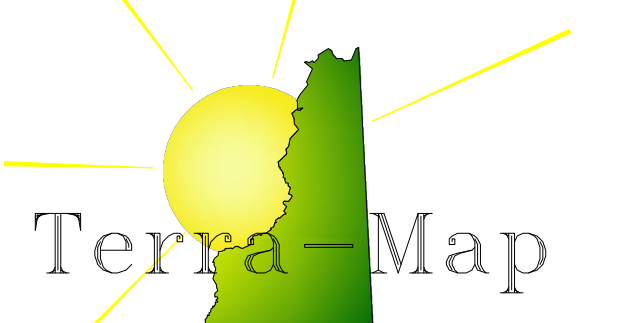


For Assessment Purposes  
Not to be used for conveyances

MAP NOTES: \_\_\_\_\_  
\_\_\_\_\_  
\_\_\_\_\_

Revised April 1, 2021





Phone  
603 798-4419

Fax  
603 798-4263

A Division Of  
**Avitar Associates**  
of New England, Inc.

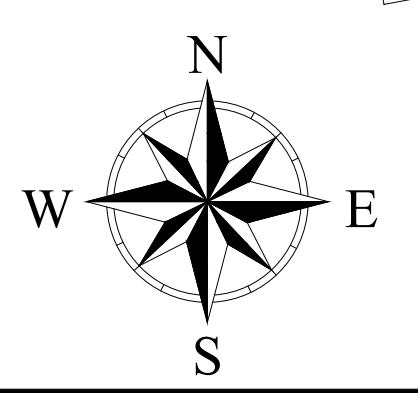
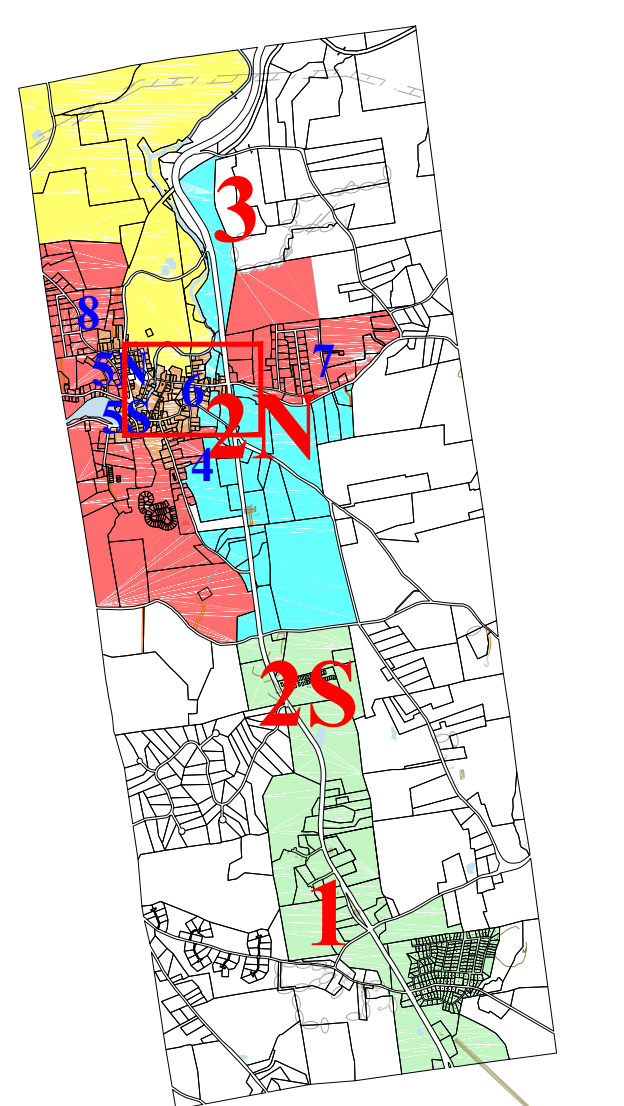
www.avitarassociates.com  
TerraMap@avitarassociates.com

# Town of GREENVILLE Hillsborough County New Hampshire

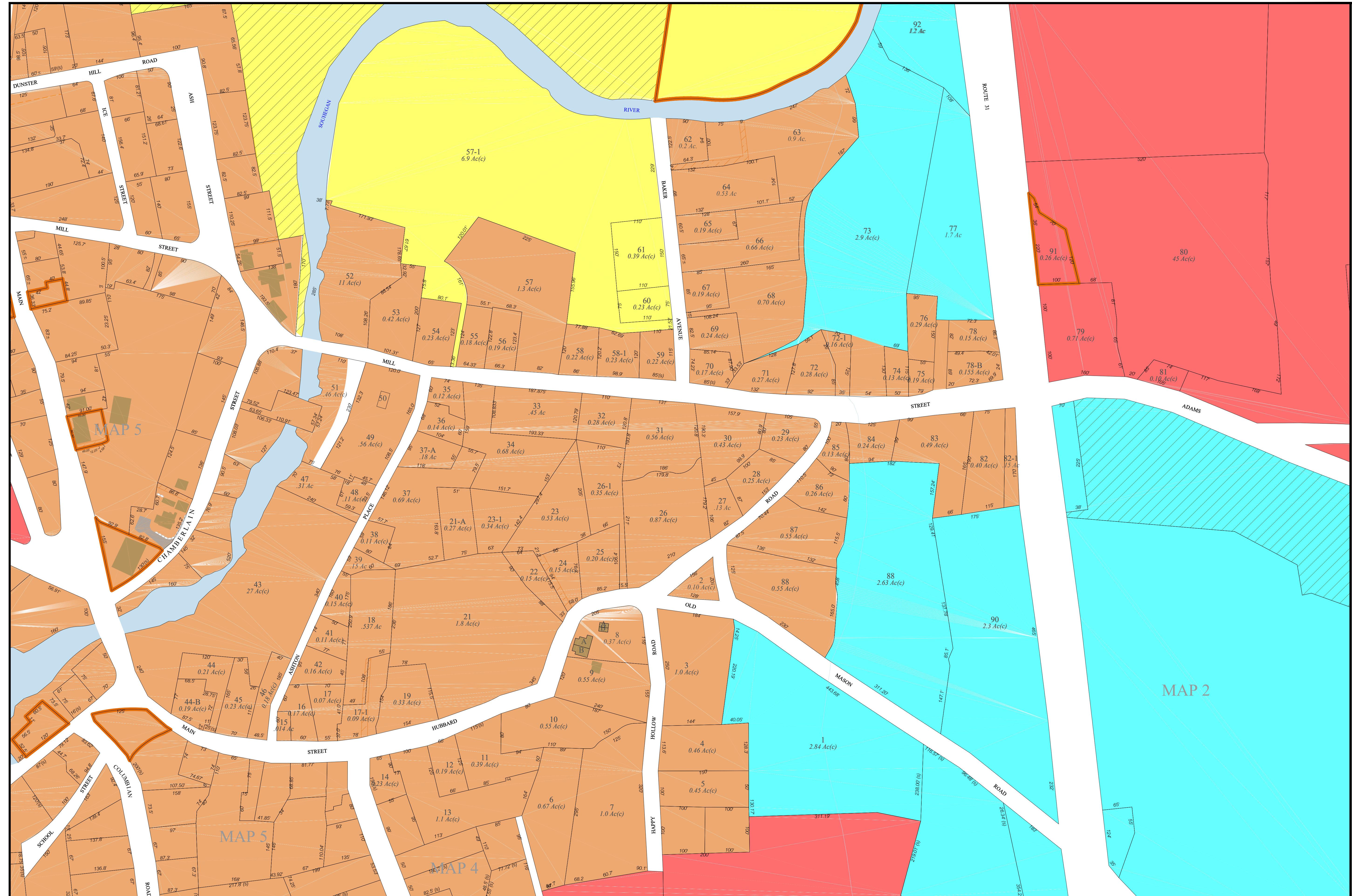
## LEGEND

- PARCEL INFO**
  - 2-12 Lot-Sub
  - 5 Ac.S Parcel Acreage
  - C - Calculated, S - Surveyed
  - 200' Dimensions (Feet)
- WATER FEATURES**
  - Lakes and Brooks
  - Wetlands
- LAND**
  - Current Use
  - Town Owned
  - ROW/Easement
- ZONING**
  - Rural / Agricultural
  - Residential
  - Downtown
  - Commercial
  - Commercial / Industrial
  - Industrial

SCALE 1" : 100'



# MAP 6

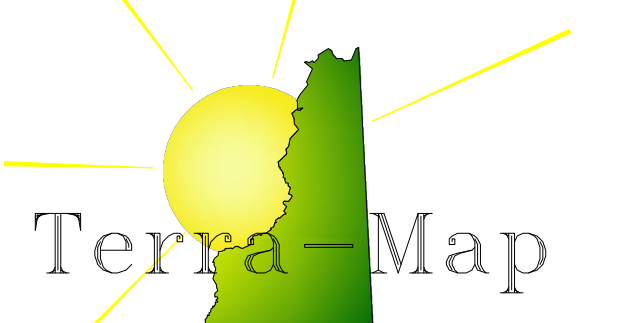


For Assessment Purposes  
Not to be used for conveyances

**MAP NOTES:** \_\_\_\_\_  
\_\_\_\_\_  
\_\_\_\_\_

Revised April 1, 2021





Phone  
603 798-4419

Fax  
603 798-4263

A Division Of  
**Avitar Associates**  
of New England, Inc.

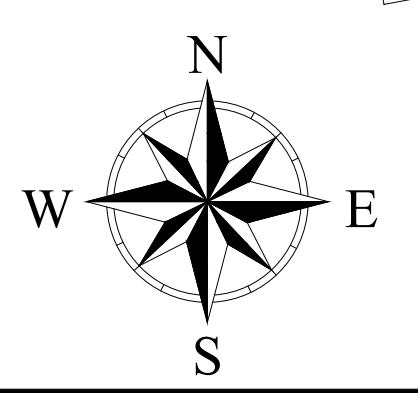
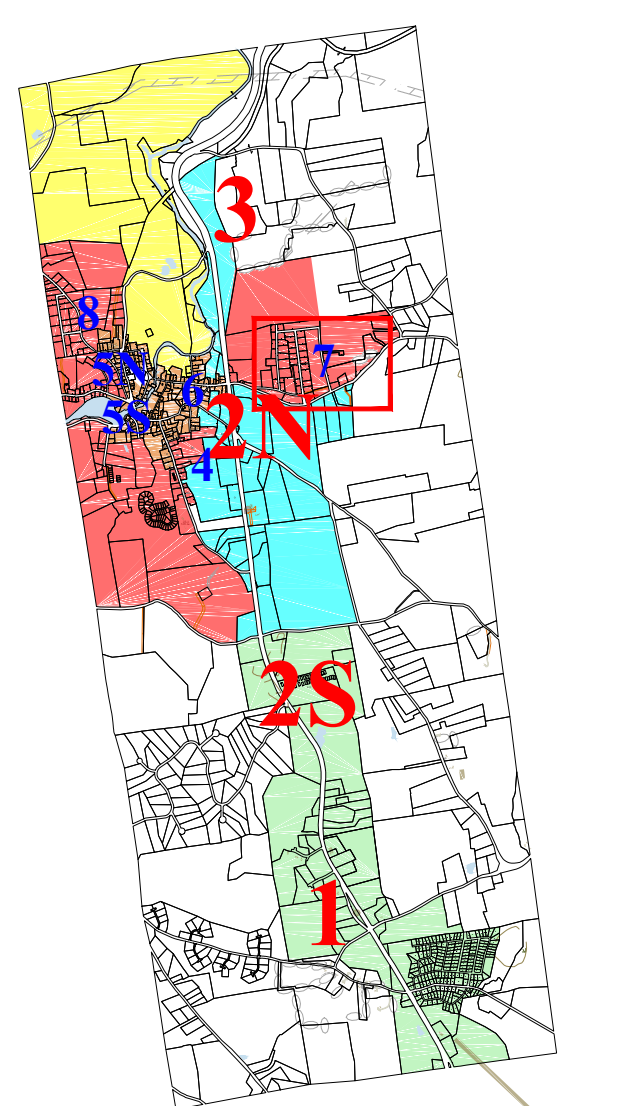
www.avitarassociates.com  
TerraMap@avitarassociates.com

# Town of GREENVILLE Hillsborough County New Hampshire

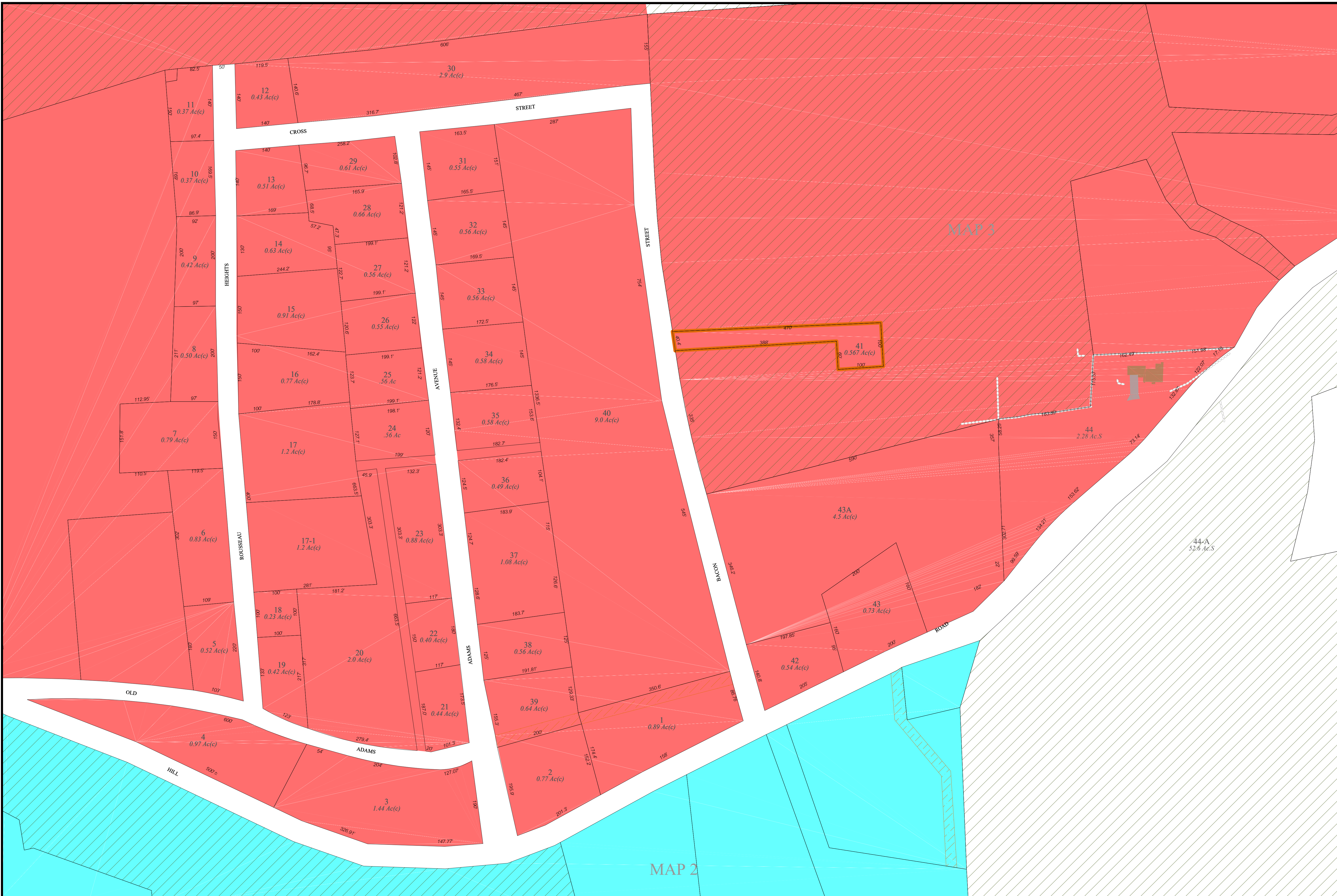
## LEGEND

- PARCEL INFO**
  - 2-12 Lot-Sub
  - 5 Ac.S Parcel Acreage
  - C - Calculated, S - Surveyed
  - 200' Dimensions (Feet)
- WATER FEATURES**
  - Lakes and Brooks
  - Wetlands
- LAND**
  - Current Use
  - Town Owned
  - ROW/Easement
- ZONING**
  - Rural / Agricultural
  - Residential
  - Downtown
  - Commercial
  - Commercial / Industrial
  - Industrial

SCALE 1" : 100'



# MAP 7

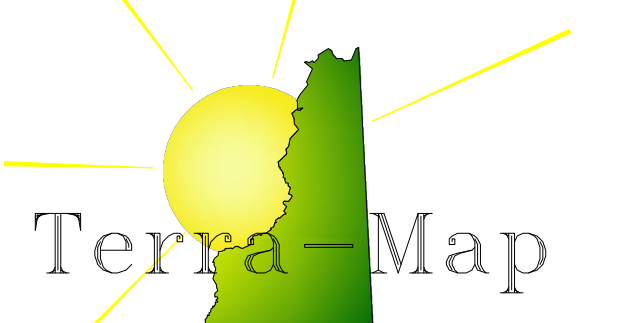


For Assessment Purposes  
Not to be used for conveyances

**MAP NOTES:** \_\_\_\_\_  
\_\_\_\_\_  
\_\_\_\_\_

Revised April 1, 2021





Phone  
603 798-4419

Fax  
603 798-4263

A Division Of  
**Avitar Associates**  
of New England, Inc.

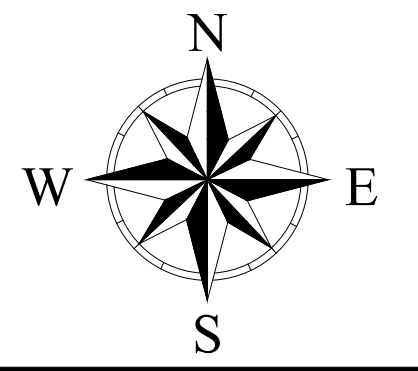
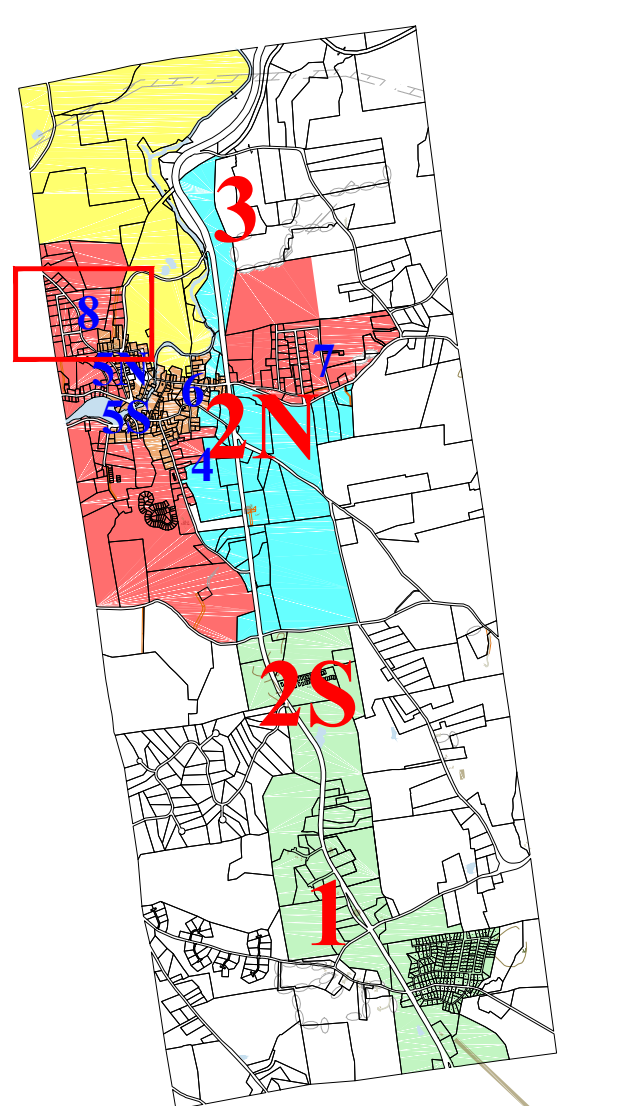
www.avitarassociates.com  
TerraMap@avitarassociates.com

# Town of **GREENVILLE** Hillsborough County New Hampshire

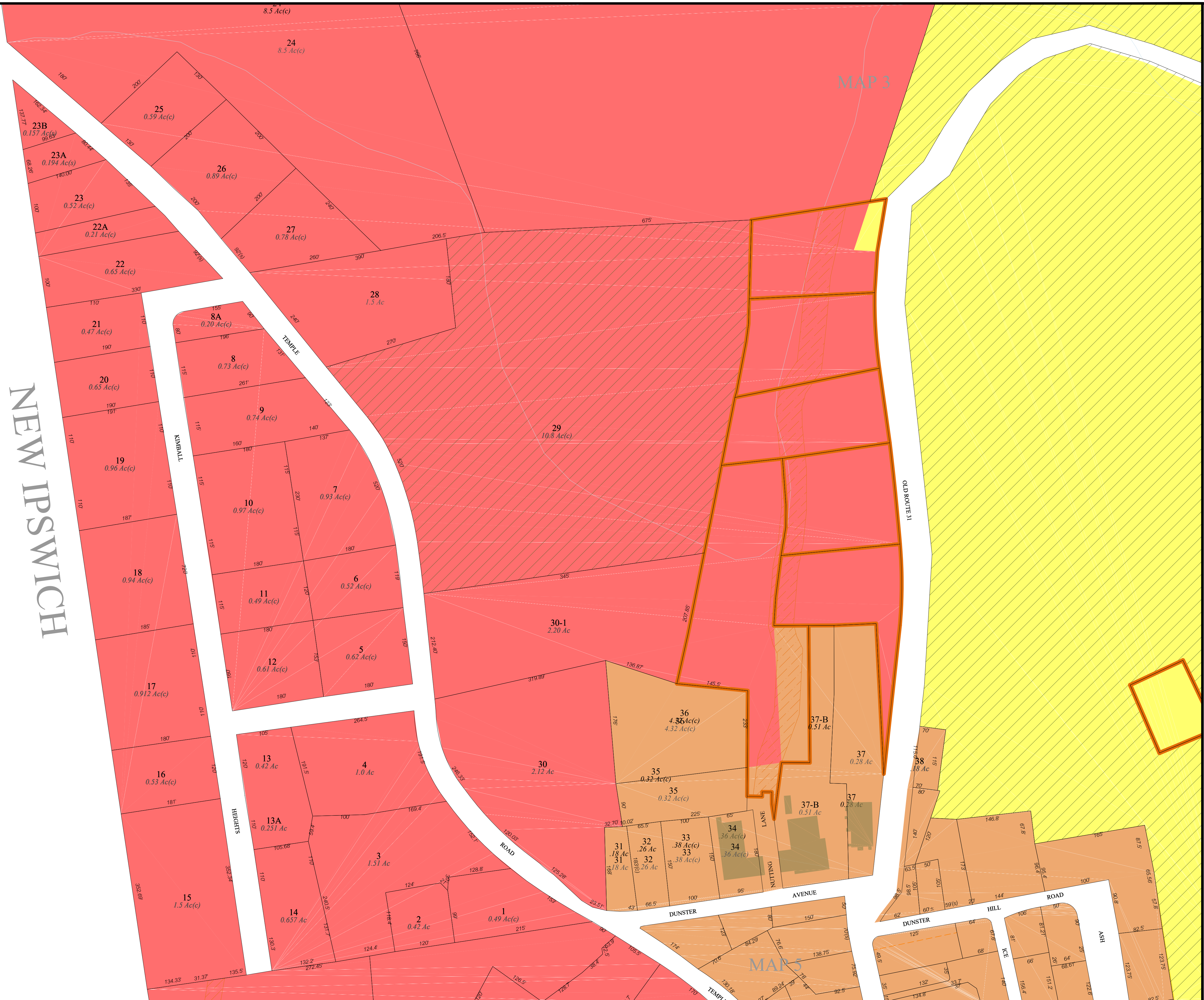
## LEGEND

- PARCEL INFO**
  - 2-12 Lot-Sub
  - 5 Ac.S Parcel Acreage
  - C - Calculated, S - Surveyed
  - 200' Dimensions (Feet)
- WATER FEATURES**
  - Lakes and Brooks
  - Wetlands
- LAND**
  - Current Use
  - Town Owned
  - ROW/Easement
- ZONING**
  - Rural / Agricultural
  - Residential
  - Downtown
  - Commercial
  - Commercial / Industrial
  - Industrial

SCALE 1" : 100'



# MAP 8



NEW IPSWICH

MAP 3

MAP 5

For Assessment Purposes  
Not to be used for conveyances

MAP NOTES: \_\_\_\_\_  
\_\_\_\_\_  
\_\_\_\_\_

Revised April 1, 2021